

## THE ALTICINI (COLEOPTERA: CHRYSOMELIDAE, GALERUCINAE) OF SICILY: RECENT RECORDS AND UPDATED CHECKLIST

COSIMO BAVIERA <sup>a\*</sup> AND MAURIZIO BIONDI <sup>b</sup>

(communicated by Salvatore Fasulo)

**ABSTRACT.** This paper compiles an updated checklist of the Sicilian flea beetle species (Coleoptera: Chrysomelidae, Galerucinae, Alticini) by a critical bibliographic screening and adding new material, mainly collected by the first author in the last few decades. The data provided expand the known distribution of many poorly known species in Sicily. An updated checklist of the species recorded from the island, including those based on unpublished data or extracted from recently examined material, is supplied: 161 species are reported, about half of the whole Italian flea beetle fauna presently known. The new records for Sicily include seven species: *Altica carduorum* Meneville-Guérin, 1858; *Chaetocnema obesa* (Boieldieu, 1859); *Longitarsus helvolus* Kutschera, 1863; *L. monticola* Kutschera, 1863; *L. rectilineatus* (Foudras, 1860); *Mniophila muscorum* (Koch, 1803) and the alien species *Epitrix hirtipennis* (Melsheimer, 1847), an invasive pest of tobacco from North America. Finally, we question the occurrence of *Longitarsus membranaceus* (Foudras, 1960) in Sicily.

### 1. Introduction

The leaf beetles (Chrysomelidae) are a highly diverse family among the other phytophagous insects, including 37,000 described species, arranged in 19 subfamilies and more than 2,000 genera (Jolivet and K. Verma 2002). The tribe Alticini is included within the subfamily Galerucinae with its closely related tribe Galerucini (Bouchard *et al.* 2011). This is probably the largest and most diverse tribe of Chrysomelidae, with more than 500 genera and 4,000-8,000 species worldwide (Seeno and Wilcox 1982), mostly small, highly specialized phytophagous, with hind legs designed for jumping with a more or less enlarged sclerified apodeme in the metafemora. The presence of this structure and the thickened hind femurs in which it is contained are widely used to separate this group from other chrysomelids. Just only in the Palaearctic Region about 1400 species, divided into 90 genera, are known (Gruev and Döberl 1997, 2005). Many species are harmful to cultivated plants, often causing significant damage. The knowledge of the Alticini fauna of Sicily, in close relationship with its central location in the Mediterranean basin hotspot, with a complex paleogeographic history and wide habitat diversity, provides an important aid in understanding the dynamics of colonization from Mediterranean environments (Stroschio *et al.* 2011). Alticini constitute an important taxonomic group from comparative biodiversity studies and conservation activities, not only because of their close association with

host plants in both agricultural and forest areas, but also because of their huge population densities (Aslan and Ayvaz 2009). Hence, even from a biogeographic and conservation management point of view, a high value assumes the presence and distribution of species. Despite the high number of species and the strong interests arising from economic entomology, the knowledge of Alticini of Sicily was based so far only on general catalogues of Italian Coleoptera like Bertolini (1872), Luigioni (1929), and Porta (1934) or on Italian Alticini (Biondi 1990). In addition, the first (and only) catalogue of Sicilian Chrysomelidae compiled by Vitale (1932, 1935) just reported the species presence but not its distribution. More data on the presence of flea beetles in Sicily were also reported mainly by Biondi (1982, 1983, 1988, 1989, 1990, 1996) and Leonardi (1970, 1972b,a, 1976, 1978, 2007). Some data are scattered in papers concerning beetle fauna of the Island (Vitale 1920; Gulli 1961), or Sicilian Islets (Daccordi and Ruffo 1975; Ratti 1987; Lo Cascio *et al.* 2006). The “Checklist and distribution of Italian fauna” (Biondi 2006), which brings together all the published data and those found in many Italian collections, reports, for the first time, on the distribution of all the Italian and Sicilian species. This paper gives us also the opportunity to observe that only for 112 species data were available about the distribution in Sicily, and often very few localities were reported for widespread, often common, species. The Fauna Europaea Database lists 150 species (and subspecies) of Alticini from Sicily, out of the 351 species globally reported from Italy (Biondi 2005-2013). In Italy nine species and one subspecies are exclusively reported in Sicily, whereas the subendemic species are four, all of them also present in Calabria (“Sicilian-South Apennine Endemic” as in Biondi, Urbani, and D’Alessandro (2013)).

## 2. Materials and methods

The aim of this work is to provide an updated account of the presence and distribution of the flea beetle species (Alticini) in Sicily. The listed taxa are based on bibliographical data and on the results of researches aiming at a better knowledge of the Sicilian Coleoptera (Baviera 2006, 2007, 2008, 2009, 2010, 2011, 2015; Baviera and Sparacio 2002; Baviera and Liberti 2010; Baviera and Magnano 2010; Belló and Baviera 2011; Caldara, Casalini, and Baviera 2012; Magrini and Baviera 2011; Baviera and Audisio 2014; Toševski *et al.* 2011, 2014, 2015). The sampling was carried out in the whole Sicily, mainly in open or forest habitats, with the aid of sweep netting or leaf-litter sifting using sieves with meshes 10 to 3 millimeters large, pitfall traps, and window traps. These data were integrated with all available literature records of regional presence. Several additional detailed localities in Sicily were added from lesser known Sicilian species, chiefly based on unpublished data from the second author’s collection (MB). The systematic nomenclatural order from the Alticini follows Biondi (1990) integrated with Biondi (2005-2013). The collected specimens were glued on entomological label paper. If extracted, the genital apparatus was soaked in diluted KOH and mounted in Euparal resine. The lists of species refer to the Fauna Europaea Database (Biondi 2005-2013), updated with the nomenclature presented in the Palaearctic Coleoptera Catalogue (Döberl 2010). For each species we provide the nomenclatural combinations, the chorotype according to the categories of Vigna Taglianti *et al.* (1993, 1999) and the distributions provided by Biondi *et al.* (1995), Biondi (1990, 2006, 2005-2013), and Biondi, Urbani, and D’Alessandro (2013), the host plant following Biondi (1990, 1996),

and any other relevant notes or citations following Biondi (1990, 1996, 2006). As for the names of botanic families, we used the last Checklist of Sicilian flora (Raimondo, Domina, and Spadaro 2010). The new records are listed as follows: locality (with municipality and province), date, collector, collecting method and habitat, number of specimens, and collection (in parentheses). As for the records taken from the literature, the source is given after the mentioned locality; updated data records from older collections are enclosed in square brackets. Genera and species are listed in alphabetical order. Data on host plants were obtained through careful bibliographic screening, integrated with inedited observations. As far as the trophic range is concerned, we refer to the terminology used by Biondi (1996): “monophagous” (MON): species with adults feeding on one or two systematically closely related plant genera; “oligophagous” (OLI): species with adults feeding on plant genera from one or two systematically closely related families; and “polyphagous” (POL): species with adults feeding on many botanical species that are not systematically closely related.

#### COROTYPE ACRONYMS

AFM = Afrotropical-Mediterranean  
AIM = Afrotropical-Indian-Mediterranean  
ASE = Asiatic-European  
CAE = Centralasiatic-European  
CAM = Centralasiatic-Mediterranean  
CEM = Centralasiatic-European-Mediterranean  
COS = Cosmopolitan  
EUM = European-Mediterranean  
EUR = European  
NAF = North African  
NET = Neotropical  
MED = Mediterranean  
OLA = Olartic  
PAL = Palaeartic  
SEU = South European  
SIE = Sibiric-European  
TEM = Turanic-European-Mediterranean  
TUE = Turanic-European  
TUM = Turanic-Mediterranean  
WEU = West European  
WME = West Mediterranean  
WPA = West Palaeartic

#### ENDEMIC DISTRIBUTION TYPE ACRONYMS

SISA = Sicilian-South-Apennine Endemic

#### PLANT FAMILY ACRONYMS

? = unknown  
AMA = Amaranthaceae

ANA = Anacardiaceae  
API = Apiaceae  
APO = Apocynaceae  
AST = Asteraceae  
BET = Betulaceae  
BOR = Boraginaceae  
BRA = Brassicaceae  
CAP = Capparidaceae  
CAF = Caprifoliaceae  
CAR = Caryophyllaceae  
CHE = Chenopodiaceae  
CYP = Cyperaceae  
CIS = Cistaceae  
CON = Convolvulaceae  
ELE = Eleagnaceae  
ERI = Ericaceae  
EUP = Euphorbiaceae  
FAB = Fabaceae  
FAG = Fagaceae  
GER = Geraniaceae  
IRI = Iridaceae  
JUN = Juncaceae  
LAM = Lamiaceae  
LIN = Linaceae  
LYT = Lythraceae  
MAL = Malvaceae  
MOR = Moraceae  
ONA = Onagraceae  
PLA = Plantaginaceae  
PLU = Plumbaginaceae  
POA = Poaceae  
PLG = Polygonaceae  
RAN = Ranunculaceae  
RES = Resedaceae  
ROS = Rosaceae  
SAL = Salicaceae  
SCR = Scrophulariaceae  
SOL = Solanaceae  
TAM = Tamaricaceae  
THY = Thymelaeaceae  
TRO = Tropaeolaceae  
ULM = Ulmaceae  
URT = Urticaceae  
VIT = Vitaceae

### 3. Results

#### FAUNISTIC LIST

#### CHRYSOMELIDAE GALERUCINAE ALTICINI Newman, 1834

##### *Altica* (Geoffroy, 1762)

*Altica ampelophaga* (Guérin-Meneville, 1858)

Chorotype - CEM

Host plants - VIT (*Vitis vinifera*), ONA (*Epilobium*, *Oenanthera*, *Circaea*) and LYT (*Lythrum salicaria*)

Trophic category - POL

New records - **Messina**: Torre Faro, Contrada Granatari, 10.VIII.2001, Leg. Baviera C.

**Notes.** Species known until now for Sicily only from Gela (Caltanissetta) and Palermo (Biondi 2006).

*Altica carduorum* (Guérin-Meneville, 1858)

Chorotype - ASE (introduced in North America)

Host plants - AST (*Carduus*)

Trophic category - MON

New records - **Messina**: Monti Nebrodi: Floresta, Sorgente S. Giacomo, 19.IV.2010, Leg. Baviera C.

**Notes.** Little common but widespread species in Italy, for the first time recorded for Sicily.

*Altica impressicollis* (Reiche, 1862)

Chorotype - EUM

Host plants - AST, ONA, LYT

Trophic category - POL

**Notes.** Rare species in Sicily, only known from Lentini (Syracuse) (Biondi 2006).

*Altica oleracea* (Linnaeus, 1758)

Chorotype - ASE

Host plants - ERI, PLG, ONA, VIT, ROS, SCR, BET, FAG, LYT

Trophic category - POL

New records - **Messina**: Monti Peloritani: Forte S. Jachiddu, 23.III.2010, Leg. Baviera C.; Monte Antennammare, 1100 m, 04.VI.2000, Leg. Baviera C.; Bosco di Malabotta, 1300 m, 14.V.2005, Leg. Baviera C.; Curcuraci, 300 m, 29.VIII.2011, alla luce, sub Pinus, Leg. Infusino M.; Francavilla di Sicilia, Fiume Alcantara, Le Gurne, 19.IV.2010, Leg. Baviera C.; **Catania**: Calatabiano, S. Marco, foce Alcantara, 11.III.2011, Leg. Baviera C.; **Trapani**: Paceco, R.N.O. Saline di Trapani e Paceco, Fiume Lenzi Baiata, 29.IV.2004, Leg. Baviera C.

**Notes.** Species known until now for Sicily only from Termini Imerese (Palermo) (Ciofalo 1886), Lipari (Aeolian Islands) (Lo Cascio *et al.* 2006). Biondi (1988, 2006) reports this species as widespread in Sicily.

*Altica palustris* (Weise, 1888)

Chorotype - TEM

Host plants - LYT (*Lythrum salicaria*)

Trophic category - MON

**Notes.** Very rare species in Sicily, known only from Monte Pagano (Nebrodi Mounts)(Biondi 1988).

*Altica quercetorum* Foudras, 1860

Chorotype - EUR

Host plants - FAG (*Quercus*), SAL (*Salix*)

Trophic category - OLI

New records - **Palermo:** Madonie, Piano Zucchi, Baita del Faggio dint., 1300 m, 22.VI.2001, Leg. Baviera C.; Monte Genuardo, 28.V.2007, Leg. Baviera C.

**Notes.** Species known until now from Sicani, Nebrodi and Peloritani Mounts (Biondi 1988, 2006) and reported as "*Haltica saliceti* Weise, 1888" from Castanea (Messina) (Vitale 1920). The real relationship among *A. quercetorum quercetorum* and *A. quercetorum saliceti* (Weise, 1888) and their taxonomic status need to be better evaluated in the future.

*Altica tamaricis* Schrank, 1785

Chorotype - ASE

Host plants - TAM, ELE, SAL

Trophic category - POL

**Notes.** Species widespread in Italy but only recently recorded for Sicily (Biondi 2005-2013).

***Aphthona* Chevrolat, 1836**

*Aphthona carbonaria* Rosenhauer, 1856

Chorotype - WME

Host plants - EUP (*Euphorbia*)

Trophic category - MON

New records - **Messina:** Monti Nebrodi: Biviere di Cesaró, 1274 m, 11.IV.2002, Leg. Baviera C.; **Trapani:** Isole Egadi: Marettimo, 14-16.V.2006, Leg. Baviera C.; ditto, 22.X.2006, Leg. Baviera C.

**Notes.** Species known until now for Sicily only from Syracuse (Heikertinger 1912) and Favignana (Egadi Islands) (Daccordi and Ruffo 1975; Biondi 2006).

*Aphthona euphorbiae* (Schrank, 1781)

Chorotype - PAL

Host plants - LIN, EUP, AST, CHE, CAR, ULM, MOR, CAF, ROS, FAB, PLA, BRA, POA

Trophic category - POL

New records - **Messina:** Torre Faro, Contrada Granatari, 12.VII.2003, Leg. Baviera C.; Monti Peloritani: Monte Scuderi, 1100 m, 29.X.2005, Leg. Baviera C.; Monte Antennammare, 1100 m, 06.X.2008, Leg. Baviera C.; **Palermo:** Madonie, Piano Zucchi, VI.1961, Leg. Ruffo S.; ditto, 03.VI.2000, 1200 m, Leg. Baviera C.; Baita del Faggio dint., 1300 m, 22.VI.2001, Leg. Baviera C.; **Messina:** Isole Eolie: Salina, 10-12.V.2007, Leg. Baviera C.; **Catania:** Monte Etna, versante occidentale, Pineta, 1600 m, 29.VII.1948, Leg. Hartig F.; ditto, Bosco Cerrita, 1500 m, 01.VII.2004, Leg. Baviera C.; ditto, versante settentrionale, Piano Provenzana, 1800 m, 08.VI.2000, Leg. Baviera C.; ditto, 23.VI.2001, Leg. Baviera C.; ditto, versante meridionale, Adrano, Osseratorio, 1400 m, 12.VI.2011 su *Genista aetnensis*, Leg. Baviera C.; ditto 1600 m, 12.VI.2011, Leg. Baviera C.; **Siracusa:** Lentini, 08.VI.2000, Leg. I.S.A.; Iblei, Buccheri, 28.V.2010, Leg. Baviera C.; **Trapani:** Isole Egadi: Marettimo, 14-16.V.2006, Leg. Baviera C.

**Notes.** Very common species in Sicily (Gulli 1961; Biondi 1988, 2006). Never recorded until now from south of Sicily and Aeolian and Egadi Islands.

*Aphthona flaviceps* Allard, 1859

Chorotype - WPA

Host plants - LIN, EUP

Trophic category - OLI

New records - **Messina:** Monti Nebrodi: Biviere di Cesaró, 1274 m, 11.IV.2002, Leg. Baviera C.;

**Trapani:** Isole Egadi: Marettimo, 14-16.V.2006, Leg. Baviera C.; ditto, 22.X.2006, Leg. Baviera C.

**Notes.** Apparently very rare species in Sicily, reported only from Peninsula Magnisi near Siracusa (Biondi 2006) and Etna Mount (Gulli 1961).

*Aphthona herbigrada* (Curtis, 1837)

Chorotype - EUR

Host plants - CIS (*Helianthemum*)

Trophic category - MON

New records - **Messina:** Monti Nebrodi: Biviere di Cesaró, 1274 m, 11.IV.2002, Leg. Baviera C.;

**Trapani:** Isole Egadi: Marettimo, 14-16.V.2006, Leg. Baviera C.; ditto, 22.X.2006, Leg. Baviera C.

**Notes.** Uncommon species in Sicily, reported only from Nebrodi Mounts (Biviere di Cesaró) (Biondi 1983).

*Aphthona nigriceps* (Redtenbacher, 1842)

Chorotype - EUM

Host plants - GER

Trophic category - OLI

New records - **Messina:** Monti Nebrodi: dint. Cesaró, 1400m, 9.VI.1992, Leg. Bologna M.;

Francavilla di Sicilia, Fiume Alcantara, Cuba Bizantina, 28.V.2010, Leg. Baviera C.; Monti Peloritani:

Monte Antennammare, 1130 m, 15.VI.2009, Leg. Baviera C.; Forte S. Jachiddu 1-2, 404 m, 29.V.2011,

Leg. Baviera C.; **Catania:** Piana, Ramacca, 17.VI.2004, Leg. Baviera C.; Calatabiano, S.Marco,

Foce Alcantara, 29.VI.2010, Leg. Baviera C.; **Siracusa:** Lentini, 08.VI.2000, Leg. I.S.A.; Torre

di Vendicari, 10 km N Pachino, 4.VI.1992, Leg. Pinto J.D.; **Ragusa:** Marina di Ragusa, 4 km E

Foce Irmínio, 5.VI.1992, Leg. Pinto J.D.; **Trapani:** Castellammare del Golfo, R.N.O. "Zingaro",

26-29.III.2003, Leg. Baviera C.; Castelvetro, Vallone Zangara, 28.V.2007, Leg. Baviera C.;

Isole Egadi, Marettimo, 16-18.IV.2006, Leg. Baviera C.; ditto, 22.X.2006, Leg. Baviera C.;

ditto, Levanzo, 4.IV.1990, Leg. Osella B.G.; **Palermo:** Madonie, Piano Zucchi, 19.VII.2005, Leg. Baviera C.;

ditto 24.IX.2010, vaglio *Q. ilex*, Leg. Baviera C.

**Notes.** Widespread species in Italy but known in Sicily only from Palermo, Nebrodi and Favignana (Egadi Islands) (Daccordi and Ruffo 1975; Biondi 1988).

*Aphthona nonstriata* (Goeze, 1777)

= *Aphthona coerulea* (Geoffroy, 1785)

Chorotype - TUE

Host plants - IRI (*Iris pseudacorus*)

Trophic category - MON

New records - **Messina:** Messina: Monti Nebrodi: Caronia, sotto Pizzo Michele, 550 m, 18.IV.1982,

Leg. Osella B.G.; Biviere di Cesaró, 27.V.2006, Leg. Baviera C.

**Notes.** Uncommon species in Sicily known only from Madonie and Nebrodi Mounts (Biondi 1988).

*Aphthona ovata* Foudras, 1860

Chorotype - EUR

Host plants - EUP (*Euphorbia*)

Trophic category - MON

New records - **Messina:** Messina: Monti Nebrodi: Caronia, sotto Pizzo Michele, 550 m, 18.IV.1982, Leg. Osella B.G.; Biviere di Cesaró, 27.V.2006, Leg. Baviera C.

**Notes.** Uncommon species, only generically recorded for Sicily (Porta 1934; Vitale 1935; Biondi 1990).

*Aphthona punctiventris* Mulsant and Rey, 1874

Chorotype - WME

Host plants - EUP (*Euphorbia*)

Trophic category - MON

**Notes.** Rare species in Italy, reported for Sicily only from a single locality (Peloritani Mounts, Malabotta Forest) (Biondi 1988).

*Aphthona pygmaea* (Kutschera, 1861)

Chorotype - EUM

Host plants - EUP (*Euphorbia*)

Trophic category - MON

New records - **Trapani:** Isola Grande dello Stagnone, 6.V.1991, Leg. Osella B.G.; Ragusa: Marina di Modica, 23.IV.2004, Leg. Leonardi C.; **Messina:** Monti Peloritani: Monte Scuderi, 1100 m, 25.VI.2005, Leg. Baviera C.; Monte Antennammare, 1100 m, 15.VI.2009, Leg. Baviera C.; Monti Nebrodi: Biviere di Cesaró, 29-30.V.2006, Leg. Baviera C.

**Notes.** Uncommon species in Sicily, known also from Favignana (Egadi Islands), Lipari (Aeolian Islands) and Nebrodi Mounts (Daccordi and Ruffo 1975; Lo Cascio *et al.* 2006; Biondi 1988).

*Aphthona semicyanea* Allard, 1859

Chorotype - ASE

Host plants - IRI (*Iris*)

Trophic category - MON

**Notes.** Rare species in Italy, recorded only generically from Sicily (Biondi 1990).

*Aphthona sicelidis* Weise, 1888

Chorotype - MED

Host plants - EUP (*Euphorbia*)

Trophic category - MON

New records - **Messina:** Monti Peloritani: Monte Scuderi, 25.VI-29.IX.2005, in pit-fall trap, Leg. Baviera C.; Patti, Montagnareale, 15.VIII.2000, Leg. Baviera C.; Monte Antennammare, 27.VI.1997, Leg. Baviera C.; ditto, 30.VI.2001; Torre Faro, Contrada Granatari, 25.XII.1998, Leg. Baviera C.; San Pier Niceto, 04.IV.2010, Leg. Baviera C.; Francavilla di Sicilia, Fiume Alcantara, Le Gurne, 29.III.2010, Leg. Baviera C.; Monti Nebrodi: Floresta, Monte Pojummoru, 1470 m, 14.VIII.1998,



Leg. Baviera C.; San Fratello, su *Quercus ilex*, 08.VIII.2001, Leg. Baviera C.; **Catania**: Calatabiano, San Marco, Foce Fiume Alcantara, 29.VI.2010, Leg. Baviera C.

**Notes.** Common and widespread species in Sicily (Heikertinger 1912; Luigioni 1929; Biondi 1988, 2006) (often reported as *Aphthona bonvouloiri sicelidis*), where it represents probably the unique endemic species in the Sicilian flea beetle fauna.

*Aphthona variolosa* Foudras, 1860

Chorotype - WME

Host plants - EUP (*Euphorbia*)

Trophic category - MON

**Notes.** Rare species in Italy, recorded only generically from Sicily (Biondi 1990).

*Aphthona venustula* (Kutschera, 1861)

Chorotype - EUR

Host plants - EUP (*Euphorbia*)

Trophic category - MON

New records - **Messina**: Lido Spiaggia d'oro, 23.III.2010, Leg. Baviera C.; Monti Peloritani: Pizzo Chiarino, 650 m, 23.III.2010, Leg. Baviera C., ditto 06.IV.2004; Camaro Superiore, 26.IV.2000, Leg. Baviera C.; Monte Antennammare, 05.V.2004, Leg. Baviera C.; Monte Scuderi, Fiume Lampiello, 600 m, 14.IV.2004, Leg. Baviera C.; Monte Scuderi, 1200 m, 22.V.2004, Leg. Baviera C.; Patti, Montagnareale, 15.VIII.2000, Leg. Baviera C.; Monti Nebrodi: Biviere di Cesaró, 11.IV.2002, Leg. Baviera C.; Portella Maulazzo, 900 m, 18.VIII.1997, Leg. Baviera C.; Floresta, Sorgente S. Giacomo, 29.III.2010, Leg. Baviera C.; **Palermo**: Monti Sicani: Monte Genuardo, 28.V.2007, Leg. Baviera C.; Ficuzza, 15-18.V.1911; Portella della Ginestra, 25.IV.2008, Leg. Baviera C.; Madonie, Piano Zucchi, 1100 m, 17.V.2008, Leg. Baviera C.; **Catania**: Linguaglossa, 08.VI.2000, Leg. Baviera C.; Monte Etna, Nicolosi, 1500 m, 28.VII.1968, Leg. Magnano L.; Monte Etna, Montelaguardia, 750 m, 20.X.1948, Leg. Hartig F.; **Siracusa**: Buccheri, 28.V.2010, Leg. Baviera C.; **Trapani**: Castellammare del Golfo, R.N.O. "Zingaro", 26-29.III.2003, Leg. Baviera C.

**Notes.** Widespread species in Sicily with populations to attribute to the ssp. *attica* Weise, 1890, particularly common in Sicani, Nebrodi and Peloritani Mounts (Biondi 1988, 2006).

*Apteropeda Chevrolat, 1836*

*Apteropeda orbiculata* (Marsham, 1802)

Chorotype - EUR

Host plants - LAM, SCR

Trophic category - POL

New records - **Messina**: Monti Peloritani: Castanea, Monte Ciccica, 400 m, 06.I.2010 vaglio *Quercus*, Leg. Baviera C.; Monforte San Giorgio, 340 m, 06.II.2011 Leg. Baviera C.; Monti Nebrodi: Monte Soro, 1800 m, 1.VI.1907, Leg. Belló C.

**Notes.** Uncommon species widespread in most part of Italy and Sicily (Biondi 1990).

*Arrhenocoela Foudras, 1861*

*Arrhenocoela lineata* (Rossi, 1790)

Chorotype - MED

Host plants - ERI (*Erica*)

Trophic category - MON

**Notes.** Uncommon species in Sicily recorded only from Peloritani Mounts (Vitale 1920; Luigioni 1929).

### ***Batophila* Foudras, 1860**

*Batophila aerata* (Marsham, 1802)

Chorotype - EUM

Host plants - ROS (*Rosa*, *Rubus*)

Trophic category - OLI

New records - **Palermo:** Madonie: località La Liccia, 800m, 29.V.2007, Leg. Baviera C.; località Ortaggi, 1400 m, 26.X.2006, Leg. Baviera C.; Monti Sicani: Ficuzza dint. Alpe Cucco, 950 m., 16.IV.2010, *Quercus ilex*, Leg. Baviera C. and Belló C.

**Notes.** Common species in Italy, known in Northern Sicily also from Nebrodi and Peloritani Mounts (Vitale 1920; Biondi 1988).

### ***Chaetocnema* Stephens, 1831**

*Chaetocnema arida* Foudras, 1860

Chorotype - EUM

Host plants - CYP, JUN

Trophic category - OLI

New records - **Messina:** Monti Nebrodi: Mistretta, Urio Quattrocchi, 1000 m, 30.IV.2003, Leg. Baviera C.; Biviere di Cesaró, 1274 m, 11.IV - 19.VI.2002, in trappola a caduta, Leg. Baviera C.

**Notes.** Uncommon but widespread species in Italy, reported until now for Sicily only from Madonie Mounts (Piano Battaglia) (Biondi 1988).

*Chaetocnema aridula* (Gyllenhal, 1827)

Chorotype - PAL

Host plants - POA, CYP (*Cyperus esculentus*)

Trophic category - POL

**Notes.** Species recorded in Sicily from Madonie, Nebrodi and Peloritani Mounts (Biondi 1988).

*Chaetocnema concinna* (Marsham, 1802)

Chorotype - PAL (introduced also in Canada)

Host plants - PLG, AMA

Trophic category - POL

New records - **Messina:** Monti Nebrodi: Mistretta, Urio Quattrocchi, 1000 m, 30.IV.2003, Leg. Baviera C.; Biviere di Cesaró, 1274 m, 26.V.2004, Leg. Baviera C.; ditto, 02.VII.2005; ditto, 19.VIII.2006; ditto, 01.VI.2007; **Palermo:** Madonie: Piano Battaglietta 1600 m, 16.V.2008, Leg. Baviera C. and Rando A.

**Notes.** Common and widespread species in Italy, recorded until now only generically for Sicily (Biondi 1990).

*Chaetocnema conducta* (Motschulsky, 1838)

Chorotype - AFM

Host plants - CYP, JUN, POA

Trophic category - POL

**Notes.** Common and widespread species in Italy, recorded only generically for Sicily (Biondi 1990).

*Chaetocnema hortensis* (Geoffroy, 1785)

Chorotype - ASE

Host plants - POA

Trophic category - OLI

New records - **Catania:** Monte Etna: Northern Slope, Piano Provenzana 1900 m, 10.VIII.1998, Leg. Baviera C.; **Palermo:** Monti Sicani: Portella della Ginestra 800 m, 25.IV.2008, Leg. Baviera C.

**Notes.** Common and widespread species in Italy, reported until now for Sicily only from Peloritani and Nebrodi Mountains (Biondi 1988).

*Chaetocnema obesa* (Boieldieu, 1859)

Chorotype - CEM

Host plants - CYP (*Carex*), JUN (*Juncus*)

Trophic category - OLI

New records - **Messina:** Monti Nebrodi: Biviere di Cesaró, 1274 m, 26.V.2004, Leg. Baviera C.; **Palermo:** Monti Sicani: Prizzi, Monte Carcaci 900 m, 17.IV.2010, sub *Quercus*, Leg. Baviera C. and Belló C.

**Notes.** Species for the first time recorded for Sicily.

*Chaetocnema procerula* (Rosenhauer, 1856)

Chorotype - EUM

Host plants - CYP

Trophic category - OLI

**Notes.** Uncommon but widespread species in Italy, recorded only generically from Sicily (Biondi 1990).

*Chaetocnema punctifrons* (Abeille, 1907)

Chorotype - WME

Host plants - CYP, JUN

Trophic category - OLI

New records - **Messina:** Monti Peloritani: Bosco di Malabotta, 14.V.2005, Leg. Baviera C.; ditto, 2.VI.2006; **Palermo:** Madonie: Isnello, Piano Zucchi, 1100 m, 05.V.2000, Leg. Baviera C.; Baita del Faggio, 1400 m, 22.VI.2001, Leg. Baviera C.

**Notes.** Rare species in Southern Italy, reported until now for Sicily only from Nebrodi Mounts and Messina (Luigioni 1929; Biondi 1988).

*Chaetocnema scheffleri* (Kutschera, 1864)

Chorotype - EUM

Host plants - PLG

Trophic category - OLI

**Notes.** Uncommon but widespread species in Italy, recorded only generically for Sicily (Biondi 1990).

*Chaetocnema tibialis* (Illiger, 1807)

Chorotype - PAL

Host plants - CHE, AMA

Trophic category - POL

New records - **Messina:** Francavilla di Sicilia, Fiume Alcantara, Cuba Bizantina, 19.IV.2010, Leg. Baviera C., ditto, 19.VI.2010; Patti, Mongiove, Galice, 14.VII.2002, Leg. Baviera C.; Monti Nebrodi: Monte Soro, 1800 m, 01.VI.2007, Leg. Baviera C.; **Siracusa:** Lentini, 08.VI.2000, Leg. I.S.A.; ditto, 10.V.2000; Augusta, 08.VII.1997, Leg. I.S.A.; ditto, 08.VIII.1997; Torre di Vendicari, 10 km N Pachino, 4.VI.1992, Leg. Pinto J.D.; **Palermo:** Monti Sicani: Bisaquino, 11.III.2009, Baviera C. and Belló C.; Palazzo Adriano, 900m, 24.X.2006, Leg. Baviera C.; **Trapani:** Monte Bonifato, 12.III.2009, Leg. Baviera C.; Paceco, R.N.O. Saline di Trapani e Paceco, Fiume Lenzi Baiata, 29.IV.2004, Leg. Baviera C.; ditto, Salina Vecchia; Monti Sicani: Santa Ninfa, 365 m, 27.IX.2009, vaglio sub *Olea*, Leg. Baviera C. and Belló C.

**Notes.** Very common and widespread species in Italy, where it is considered an important pest of sugar beet, recorded before only generically from Sicily (Biondi 1990).

***Crepidodera Chevrolat, 1836***

*Crepidodera aurata* (Marsham, 1802)

Chorotype - PAL

Host plants - SAL (*Salix, Populus*)

Trophic category - OLI

New records - **Messina:** Monti Nebrodi: Floresta, Sorgente S. Giacomo, 19.IV.2010, Leg. Baviera C.; Biviere di Cesaró 1274 m, 11.IV.2002, Leg. Baviera C. ; ditto, 14.V.2004; ditto, 26.V.2004; Francavilla di Sicilia, Fiume Alcantara, Le Gurne, 29.III.2010, Leg. Baviera C.; **Enna:** Monti Erei: Monte Altesina, 03.XI.2010, 845 m, vaglio *Quercus*, Leg. Baviera C. and Belló C.

**Notes.** Species recorded until now only generically from Sicily (Biondi 1990).

*Crepidodera aurea* (Geoffroy, 1785)

Chorotype - ASE

Host plants - SAL (*Salix, Populus*)

Trophic category - OLI

New records - **Messina:** Monti Nebrodi: San Fratello, Casa Forestale, 1300 m, 20.V.2000, Leg. Baviera C.; Biviere di Cesaró 1274 m, 27.V.2006, Leg. Baviera C.; ditto, 02.VII.2005; **Catania:** Fiume Alcantara, 11.VI.2004, Leg. Baviera C.

**Notes.** Species recorded until now for Sicily only from S. Stefano di Quisquina (Sicani Mounts) and Nebrodi Mounts (Vitale 1920; Biondi 2006).

***Dibolia Latreille, 1829***

*Dibolia chevrolati* Allard, 1861

Chorotype - MED

Host plants - API (*Eryngium*)

Trophic category - OLI

**Notes.** Very rare species known in Italy only for Sicily (Nebrodi Mounts, Cesaró) (Biondi 1988).

*Dibolia cryptocephala* (Koch, 1803)

Chorotype - EUR

Host plants - API, LAM (*Thymus*)

Trophic category - POL

**Notes.** Uncommon but widespread species in Italy, recorded for Sicily from Peloritani Mounts (Biondi 1988).

*Dibolia maura* Allard, 1860

Chorotype - NAF

Host plants - LAM (*Ballota*, *Teucrium*, *Stachys*) (Doguet 1975)

Trophic category - OLI?

**Notes.** Very rare species, known in Italy only for Sicily from Syracuse (Biondi 1993).

*Dibolia occultans* (Koch, 1803)

Chorotype - EUM

Host plants - LAM

Trophic category - OLI

**Notes.** Common and widespread species in Italy, reported for Sicily from Madonie, Nebrodi and Peloritani Mounts (Vitale 1920; Biondi 1988).

*Dibolia timida* (Illiger, 1807)

Chorotype - EUR

Host plants - API (*Eryngium campestre*)

Trophic category - MON

New records - **Trapani:** Castellammare del Golfo, R.N.O. "Zingaro", 26-29.III.2003, Leg. Baviera C.

**Notes.** Widespread species in Italy, reported for Sicily from Palermo (Vitale 1920) and Nebrodi Mounts (Biondi 1988).

*Dibolia tyrrhenica* Mohr, 1981

Chorotype - MED

Host plants - ?

Trophic category - ?

New records - **Trapani:** Castellammare del Golfo, R.N.O. "Zingaro", 26-29.III.2003, Leg. Baviera C.

**Notes.** Species scarcely known, recorded for Sicily, until now, only from Palermo (La Favorita) (Biondi 1990).

### ***Epitrix* Foudras, 1861**

*Epitrix atropae* Foudras, 1860

Chorotype - EUM

Host plants - SOL

Trophic category - OLI

**Notes.** Uncommon species in Italy, recorded from Sicily from Egadi Islands (Daccordi and Ruffo 1975).

*Epitrix hirtipennis* (Melsheimer, 1847)

Chorotype - Species introduced.

Host plants - SOL

Trophic category - OLI

New records - **Messina:** Monti Peloritani, Colle San Rizzo, 28.IV.2010, Leg. Baviera C.; **Siracusa:** Lentini, 10.V.2000, Leg. I.S.A.

**Notes.** This species, introduced from North America, is also known as Tobacco Leaf Beetle and is a pest reported for the first time in Europe from Italy (Benevento) (Sannino, Balbiani, and Espinosa 1984; Sannino and Balbiani 1990). After this first report, *E. hirtipennis* has spread rapidly throughout whole Italy (Sannino, Balbiani, and Espinosa 1984), but also it was found in Azores (Portugal) (Israelson 1985), Greece (Lykouressis 1991), Turkey (Döberl 1994), Bulgaria (Trenchev and Tomov 2000), Syria (Gruev and Döberl 2005) and Russia (Orlova-Bienkowskaja 2014). This species is known mainly as a pest of tobacco, but can also feed on eggplant, potato, tomato and many other solanaceous plants (Meleshko 2001). This is the first report of *E. hirtipennis* for Sicily.

### ***Hermaeophaga Foudras, 1860***

*Hermaeophaga cicatrix* (Illiger, 1807)

Chorotype - EUM

Host plants - EUP (*Mercurialis*)

Trophic category - MON

**Notes.** Species reported only generically for Sicily (Biondi 2005-2013).

### ***Longitarsus Latreille, 1829***

*Longitarsus aeneicollis* (Faldermann, 1837)

Chorotype - WPA

Host plants - BOR, AST, LAM

Trophic category - POL

New records - **Catania,** Monte Etna, versante Nord, Piano Provenzana 1800m, 23.VI.2001, Leg. Baviera C.; **Palermo:** Madonie, Piano Zucchi, 1100 m, 19.VII.2006, Leg. Baviera C.; ditto, 03.VI.2000; Baita del Faggio, 1400 m, 22.VI.2001, Leg. Baviera C.; **Messina:** Monti Nebrodi: Floresta, Monte Pojummoru, 1470 m, 14.VIII.1998, Leg. Baviera C.; Monti Peloritani: Monte Scuderi, 25.VI.2005, Leg. Baviera C.

**Notes.** Widespread species in Sicily (Biondi 1988, 2006), not reported before from Etna Mount.

*Longitarsus aeneus* Kutschera, 1862

Chorotype - MED (introduced also in Australia)

Host plants - BOR

Trophic category - OLI

New records - **Siracusa:** Monti Iblei: Sortino, 300 m, 14.IV.2010, vaglio *Quercus* and *Olea*, Leg.

Baviera and Belló; **Trapani**: Castellammare del Golfo, R.N.O. “Zingaro”, 26-29.III.2003, Leg. Baviera C.; Isole Egadi: Marettimo, 16-18.IV.2006, Leg. Baviera C.

**Notes.** Uncommon species in Sicily, reported until now only from Mondello (Palermo) and Nebrodi Mounts (Messina) (Heikertinger 1914; Biondi 1988).

*Longitarsus aeruginosus* (Foudras, 1860)

Chorotype - EUM

Host plants - AST

Trophic category - OLI

**Notes.** Species reported only generically from Sicily (Biondi 1990).

*Longitarsus albineus* (Foudras, 1860)

Chorotype - TEM (introduced in Australia)

Host plants - BOR (*Heliotropium*)

Trophic category - MON

New records - **Palermo**: Monti Sicani: Bisacquino, 550m, 11.III.2009, Leg. Baviera C. and Belló C. vaglio *Olea*; Contessa Entellina, 370 m, 11.III.2009 vaglio *Olea*, Leg. Baviera and Belló; **Trapani**: Castellammare del Golfo, R.N.O. Zingaro, 22-25.VI.2003, Leg. Baviera C.; Paceco, R.N.O. Saline di Trapani e Paceco, Salina Vecchia, 28.IV.2004, Leg. Baviera C.; **Siracusa**: Augusta, 08.VII.1997, Leg. I.S.A.

**Notes.** Species reported until now for Sicily only from Santo Stefano di Quisquina (Agrigento) (Biondi 2006).

*Longitarsus albus* (Allard, 1866)

Chorotype - NAF

Host plants - AST

Trophic category - OLI

**Notes.** Species known in Italy only for Sicily (Ragusa, Scoglitti) (Biondi 2006). Furth (1979) collected *L. albus* in Israel on *Senecio joppensis*. Leonardi (pers. comm.) collected this species in Pozzallo (Syracuse) and Marina di Modica (Ragusa) also on Asteraceae (*Launaea resedifolia* and *Glebionis coronaria*).

*Longitarsus anacardius* (Allard, 1866)

Chorotype - WME

Host plants - LAM, PLA (*Plantago*)

Trophic category - POL

New records - **Siracusa**: Monti Iblei, Monte Casale, 27.V.2010, Leg. Baviera C.; **Messina**: Monti Nebrodi: Biviere di Cesaró, 1274 m, 11.IV.2002, Leg. Baviera C.

**Notes.** Species recorded only recently for Italy and currently known from Sardinia, Basilicata and Sicily (Leonardi and Sassi 1997).

*Longitarsus anchusae* (Paykull, 1793)

Chorotype - ASE

Host plants - BOR

Trophic category - OLI

New records - **Catania**: Monte Etna: North slope, Piano Provenzana 1900 m, 10.VIII.1998, Leg. Baviera C.

**Notes.** Species reported until now for Sicily only from Termini Imerese (Palermo) (Ciofalo 1886) and Nebrodi and Peloritani Mounts (Biondi 1988).

*Longitarsus atricillus* (Linnaeus, 1761)

Chorotype - PAL

Host plants - RAN, FAB, AST, LAM

Trophic category - POL

**Notes.** Species widespread in Italia and reported only generically for Sicily (Biondi 1990).

*Longitarsus australis* (Mulsant and Rey, 1874)

Chorotype - EUM

Host plants - SCR (*Scrophularia*)

Trophic category - MON

**Notes.** Uncommon species in Italy, reported only generically for Sicily (Biondi 1990).

*Longitarsus ballotae* (Marsham, 1802)

Chorotype - CAM

Host plants - LAM (*Ballota*, *Marrubium*, *Glechoma*)

Trophic category - OLI

New records - **Palermo:** Madonie, Piano Battaglietta 1600 m, 16.V.2008, Leg. Baviera C.; Piano Zucchi, 17.V.2008, Leg. Baviera C.; ditto, 25.IV.2008; **Messina:** Monti Peloritani: Monte Scuderi 1200 m, 22.V.2004, Leg. Baviera C.

**Notes.** Common and widespread species in Italy, reported until now only generically for Sicily (Biondi 1990).

*Longitarsus brisouti* Heikertinger, 1912

Chorotype - EUR

Host plants - SCR (*Scrophularia*)

Trophic category - MON

**Notes.** Uncommon species in Italy, reported only generically for Sicily (Biondi 1990).

*Longitarsus candidulus* (Foudras, 1860)

Chorotype - MED

Host plants - THY (*Daphne gnidium*, *Thymelaea hirsuta*)

Trophic category - MON

**Notes.** Locally common species in Italy, reported for Sicily only from Lipari (Aeolian Islands) (Lo Cascio *et al.* 2006).

*Longitarsus cerinthes* (Schränk, 1798)

Chorotype - EUM

Host plants - BOR

Trophic category - OLI

New records - **Messina:** Francavilla di Sicilia, Fiume Alcantara, Le Gurne, 19.IV.2010, Leg. Baviera C.; Monti Peloritani: Monte Antennammare, 15.VI.2009, Leg. Baviera C.; Torre Faro, contrada Granatari, 12.V.2001, Leg. Baviera C.; **Catania:** Monte Etna, versante meridionale, Adrano Osservatorio, 1200 m, 12.VI.2011, bosco misto, Leg. Baviera; **Ragusa:** Marina di Modica, 23.IV.2004, Leg.



Leonardi C.; **Trapani**: Paceco, R.N.O. Saline di Trapani e Paceco, Salina Anselmo, 28.IV.2004, Leg. Baviera C.

**Notes.** Widespread and locally common species in Italy, reported for Sicily also from Favignana (Egadi Islands) and Pantelleria (Daccordi and Ruffo 1975; Ratti 1987).

*Longitarsus codinai* Madar and Madar, 1965

Chorotype - WME

Host plants - CON

Trophic category - OLI

New records - **Messina**: Città, Annunziata, 30.VI.2001, Leg. Baviera C.; Isole Eolie, Vulcano, loc. Piano, 300 m, 24-29.VII.2001, Leg. Baviera C.; Tindari, Oliveri, R.N.O. Laghetti di Marinello, 18.X.2002, Leg. Baviera C.; Monti Nebrodi: Monte Soro, 1800 m, 01.VI.2007, Leg. Baviera C.; ditto, 1500 m, 08.VIII.2001; **Siracusa**: Monti Iblei: Buscemi, 600 m, 14.IV.2010, vaglio *Olea*, Leg. Baviera and Belló; **Palermo**: Monti Sicani: Monte Genuardo, 20.V.2007, Leg. Baviera C.; Madonie, Piano Zucchi, 1100 m, 19.VII.2006, Leg. Baviera C.; Baita del Faggio, 1400 m, 22.VI.2001, Leg. Baviera C.; **Trapani**: Isole Egadi, Marettimo, 14-16.V.2006, Leg. Baviera C.

**Notes.** Widespread species in Sicily (Leonardi 1972b; Biondi 1988, 2006), not recorded before from Aeolian Islands.

*Longitarsus corynthius* (Reiche and Saulcy, 1858)

Chorotype - MED

Host plants - BOR

Trophic category - OLI

New records - **Trapani**: Castellammare del Golfo, R.N.O. "Zingaro", 26-29.III.2003, Leg. Baviera C.

**Notes.** Species reported until now only generically from Sicily (Biondi 1990). The West-Mediterranean populations of this species are to attribute to the ssp. *metallescens* (Foudras, 1860).

*Longitarsus curtus* (Allard, 1860)

Chorotype - ASE

Host plants - BOR

Trophic category - OLI

**Notes.** Uncommon species in Italy, reported for Sicily from Peloritani and Nebrodi Mounts (Biondi 1988).

*Longitarsus echii* (Koch, 1803)

Chorotype - EUM (introduced in Australia)

Host plants - BOR

Trophic category - OLI

New records - **Agrigento**: Pelagie, Lampedusa, Spiaggia dei Conigli, 30.IV.1991, Leg. Poggi R.; **Siracusa**: Portopalo di Capo Passero, 15 m, 01.XI.2010, Leg. Baviera C. and Belló C.

**Notes.** Species reported for Sicily also from Nebrodi Mounts and Linosa Island (Biondi 1988; Lo Valvo and Massa 1995).

*Longitarsus exsoletus* (Linnaeus, 1758)

Chorotype - CAE

Host plants - BOR

Trophic category - OLI

New records - **Catania**: Monte Etna: versante Nord, Piano Provenzana 1800 m, 08.VI.2000, Leg. Baviera C.; ditto, 23.VI.2001; **Palermo**: Madonie, Piano Zucchi, 03.VI.2000, Leg. Baviera C.; Petralia soprana, 1400 m, 16.V.2007, Leg. Baviera C.; Monti Sicani: Palazzo Adriano, 24.X.2006, Leg. Baviera C.; **Messina**: Monti Peloritani: Monte Antennammare, 15.VI.2009, Leg. Baviera C.; Bosco di Malabotta, 08.VIII.2007, alla luce, Leg. Baviera C.; Monti Nebrodi: Portella Femmina Morta, 1542 m, 25.VI.2001, Leg. Baviera C.; San Fratello, dint. Case Cicala, 1300 m, 25.VI.2001, Leg. Baviera C.

**Notes.** Uncommon but widespread species in Sicily (Biondi 1988, 2006), not reported before from Madonie and Etna Mount.

*Longitarsus fallax* Weise, 1888

Chorotype - CAM

Host plants - BOR

Trophic category - OLI

New records - **Messina**: Monti Peloritani: Gualtieri Sicaminó, Li Pantani, 04.IV.2010, Leg. Baviera C.

**Notes.** Rare species in Sicily known only from single localities in Nebrodi and Iblei Mounts (Biondi 1988; Leonardi 1973).

*Longitarsus foudrasi* Weise, 1893

Chorotype - EUM

Host plants - SCR (*Verbascum*, rarely *Scrophularia*)

Trophic category - MON

New records - **Messina**: Monti Peloritani: Monte Antennammare 1133m, 27.VI.1997, Leg. Baviera C.; ditto, 23.VII.2000.

**Notes.** Common and widespread species in Italy, reported for Sicily also from Levanzo (Egadi Islands) (Leonardi 1972b).

*Longitarsus frontosus* Normand, 1947

Chorotype - WME

Host plants - LAM (*Teucrium fruticans*)

Trophic category - MON

New records - **Trapani**: Erice, 07.XI.2010, 260 m, Bosco Misto, Leg. Belló C.

**Notes.** Very localized species in Italy, known until now for Sicily only from Monte Veneretta (Messina) (Biondi 2006).

*Longitarsus gracilis* Kutschera, 1864

Chorotype - EUR

Host plants - AST

Trophic category - OLI

New records - **Messina**: Isole Eolie: Stromboli, 07-09.IV.2006, Leg. Baviera C.

**Notes.** Uncommon species in Italy, reported until now for Sicily only from Castanea (Messina) in Peloritani Mounts (Leonardi 1973).

*Longitarsus helvolus* Kutschera, 1863

Chorotype - SEU

Host plants - LAM (*Teucrium*) (Doguet 1994)

Trophic category - MON

New records - **Messina**: Isole Eolie: Stromboli, 0709.IV.2006, Leg. Baviera C.

**Notes.** Species reported only recently for Italy. The single specimen previously reported for Sicily from Peloritani Mounts (Castanea) (Leonardi 1972b), probably belongs to this species rather than to *L. membranaceus* (Foudras, 1860) (Leonardi pers. comm.).

*Longitarsus jacobaeae* (Waterhouse, 1858)

Chorotype - CAE (introduced in North America and Australia)

Host plants - AST

Trophic category - OLI

**Notes.** Uncommon species reported for Sicily only from Nebrodi Mounts (Biondi 1988).

*Longitarsus juncicola* (Foudras, 1860)

Chorotype - TEM

Host plants - LAM

Trophic category - OLI

New records - **Siracusa**: Iblei: Buccheri, 28.V.2010, Leg. Baviera C.; **Messina**: Monti Nebrodi: Lago Tre Arie, 02.VII.2005, Leg. Baviera C.

**Notes.** Very common species in Northern Sicily, recorded from Madonie, Nebrodi and Peloritani Mounts (Biondi 1988; Leonardi 1973). For the first time this species is recorded from Iblei Mounts.

*Longitarsus lateripunctatus* Rosenhauer, 1856

Chorotype - EUM

Host plants - BOR

Trophic category - OLI

New records - **Palermo**: Monte Pellegrino, 370 m, 20.III.2010, Leg. Baviera C.; Termini Imerese, 29.V.2007, Leg. Baviera C.; Monti Sicani: Palazzo Adriano, 900m, 24.X.2006, Leg. Baviera C.; Chiusa Sclafani, 17.III.2008, vaglio, Leg. Baviera C. and Belló, C.; Bosco della Ficuzza, 1200m, 7.VI.1992, Leg. Pinto J.D.; Geraci, 8.VI.1992, Leg. Pinto J.D.; **Messina**: Monti Peloritani: Musolino 700m, 04.VI.2000, Leg. Baviera C.; Monte Antennammare, 1133m, 06.X.2008, vaglio, Leg. Baviera C.; Torre Faro, Contrada Granatari, 28.IV.2000, Leg. Baviera C.; Mortelle, Lido, pit-fall traps, 19.X-03.XI.2004, Leg. Baviera C.; ditto Lido Spiaggia D'oro, 29.V.2011, Leg. Baviera C.; San Pier Niceto 350 m (1♂ 2♀), 19.VI.2011, Leg. Baviera C.; **Catania**: Caltagirone, near San Pietro area, 5.VI.1992, Leg. Pinto J.D.; Monte Etna, Mareneve, 1200m, 3.VI.1992, Leg. Pinto J.D.; **Agrigento**: Laghetto Gorgo, 13 km NW Montallegro, 7.VI.1992, Leg. Pinto J.D.; **Siracusa**: Lentini, 08.VI.2000, Leg. I.S.A.; Torre di Vendicari, 10 km N Pachino, 4.VI.1992, Leg. Pinto J.D.; **Trapani**: Castelvetro, Vallone Zangara, 28.V.2007, Leg. Baviera C.; Isole Egadi: Favignana, M. S. Caterina 250 m, 37°55.7N 12°18.8E, 12.V.2008, Leg. Liberti G.

**Notes.** Locally common species in Italy, reported until now only generically for Sicily (Biondi, 1990). Both the subspecies, *L. lateripunctatus* s.str. and *L. lateripunctatus personatus* Weise are occurring in Sicily. However, the distribution and real taxonomic status of these two taxon need further investigation.

*Longitarsus laureolae* Biondi, 1988

Chorotype - SEU (SISA endemic type)

Host plants - THY (*Daphne laureola*)

Trophic category - MON

**Notes.** South Appenninic endemic species recorded for Sicily from Peloritani and Nebrodi Mounts (Biondi 1988).

*Longitarsus linnaei* (Duftschmid, 1825)

Chorotype - TUE

Host plants - BOR

Trophic category - OLI

New records - **Messina:** Francavilla di Sicilia, Fiume Alcantara, Le Gurne, 19.IV.2010, Leg. Baviera C.; Monti Peloritani: Monte Antennammare, 15.VI.2009, Leg. Baviera C.; Rometta, Gimello, San Leone, 20.V.2008, Leg. Baviera C.; Monti Nebrodi: Biviere di Cesaró, 1274 m, 11.IV.2002, Leg. Baviera C.

**Notes.** Species reported until now only generically for Sicily (Biondi 1990).

*Longitarsus luridus* (Scopoli, 1763)

Chorotype - PAL (introduced in North America)

Host plants - RAN, BOR, LAM, PLA, CAF, SCR

Trophic category - POL

New records - **Messina:** Patti, Olivieri, Laghetti di Marinello, 10.X.2007, Leg. Baviera C.; Monti Peloritani: Musolino, 600 m, 04.VI.2000, Leg. Baviera C.; Salice Urni 380 m, 31.V.2011, Leg. Baviera C.; Bosco di Malabotta, 02.X.2007, alla luce, Leg. Baviera C.; ditto, 24.IV.2005; ditto, 16.IV-14.V.2005, in pit-fall trap, Leg. Baviera C.; Monte Scuderi, 18-VI.2004-18.III.2005, in pit-fall trap, Leg. Baviera C.; Monti Nebrodi: Floresta, Sorgente San Giacomo, Alcantara, 1056 m, 29.III.2010, Leg. Baviera C.; **Palermo** Monti Sicani: Ficuzza, Crocefisso 900 m, 25.IX.2010, vaglio *Quercus*, Leg. Baviera C.

**Notes.** Very common and widespread species in Italy, reported until now for Sicily only from Nebrodi Mounts (Biondi 1988).

*Longitarsus lycopi* (Foudras, 1860)

Chorotype - TEM

Host plants - LAM

Trophic category - OLI

New records - **Messina:** Bosco di Malabotta, 14.V.2005, Leg. Baviera C.

**Notes.** Species known for Sicily from Sicani, Madonie, Nebrodi and Peloritani Mounts (Biondi 1988; Leonardi 1973).

*Longitarsus melanocephalus* (De Geer, 1775)

Chorotype - ASE

Host plants - PLA (*Plantago*)

Trophic category - MON

New records - **Messina:** Bosco di Malabotta, 14.V.2005, Leg. Baviera C.

**Notes.** Species reported for Sicily from Palermo (Vitale 1920) and Nebrodi (Portella di Femmina Morta) (Biondi 1988).

*Longitarsus membranaceus* (Foudras, 1860)

Chorotype - EUM

Host plants - LAM

Trophic category - OLI

**Notes.** The occurrence of this species in Italy needs further confirmation. *L. membranaceus* was reported for Sicily only from Castanea (Messina) in Peloritani Mounts (Leonardi 1972b), but this single specimen is probably to attribute to the species *L. helvolus* Kutschera (Leonardi pers. comm.). *L. membranaceus* is so probably to exclude from the Sicilian fauna.

*Longitarsus monticola* Kutschera, 1863

Chorotype - CAE

Host plants - BOR

Trophic category - OLI

New records - **Messina:** Monti Peloritani: Bosco di Malabotta, 12.V.2009, Leg. Baviera C.; ditto, 24.IV.2006.

**Notes.** Species only recently distinct from *Longitarsus curtus* (Allard 1860), reported previously for Italy only from Abruzzo (Biondi 2006). Leonardi (pers. comm.) examined specimens also from Raibl (Venezia Giulia), Raut Mount (Carnia), Gressoney (Aosta), Nava (Maritime Alps), Penna Mount (Ligurian Apennines), Gargonza (Arezzo), Campigna (Romagna) and Maddalena Mountains (Potenza). This is the first record of this taxon for Sicily.

*Longitarsus nanus* (Foudras, 1860)

Chorotype - EUM

Host plants - LAM

Trophic category - OLI

**Notes.** Rare and localized species in Italy, reported only generically for Sicily (Biondi 1990).

*Longitarsus niger* (Koch, 1803)

Chorotype - EUR

Host plants - BOR, PLA

Trophic category - POL

New records - **Messina:** Bosco di Malabotta, 25.VII.2006, Leg. Baviera C.

**Notes.** Species reported until now for Sicily only from Nebrodi Mounts (Biondi 1988).

*Longitarsus nigrofasciatus* (Goeze, 1777)

Chorotype - TEM

Host plants - SCR (*Verbascum*, *Scrophularia*)

Trophic category - OLI

New records - **Messina:** Monti Peloritani: Monte Antennammare, 1133m, 15.V.2002, Leg. Baviera C.; ditto, 06.XI.2008; Pizzo Chiarino, 23.V.2006, Leg. Baviera C.; Monti Nebrodi: Monte Soro, 1850m, 21.X.2006, vaglio, Leg. Baviera C.

**Notes.** Species reported until now only generically for Sicily (Porta 1934; Vitale 1935; Biondi 1990).

*Longitarsus obliteratoides* Gruev, 1973

Chorotype - EUR

Host plants - LAM

Trophic category - OLI

New records - **Messina**: Monti Peloritani: Rometta, Gimello, S: Leone, 480 m, 31.X.2007, vaglio Quercus, Leg. Baviera C.

**Notes.** Widespread species in Sicily and Sicilian islands (Gruev 1973; Daccordi and Ruffo 1975; Ratti 1987; Biondi 1988, 2006).

*Longitarsus ochroleucus* (Marsham, 1802)

Chorotype - WPA

Host plants - AST

Trophic category - OLI

New records - **Messina**: Monti Peloritani: Monte Antennammare, 19.VI.2009, Leg. Baviera C.; ditto, 30.X.2009.

**Notes.** Widespread species in Italy, reported until now for Sicily only from Catania (Etna Mount, West Slope, 1700 m) (Biondi 2006).

*Longitarsus parvulus* (Paykull, 1799)

Chorotype - PAL

Host plants - LIN (*Linum*)

Trophic category - MON

New records - **Messina**: Città, Forte S. Jachiddu, 28.IV.2010, Leg. Baviera C.; Torre Faro, Contrada Granatari, 27.V.2000, Leg. Baviera C.; Monti Peloritani: Monte Antennammare, 27.IX.2009, Leg. Baviera C.; ditto, 15.VI.2009; Monti Nebrodi. Biviere di Cesaró, 1274m, 11.IV.2002, Leg. Baviera C.; **Catania**: Monte Etna, versante nord, Piano Provenzana dint. 2100 m, 16.V.2002, Leg. Baviera C.; **Siracusa**: Lentini, 17.V.2000, Leg. I.S.A.

**Notes.** Widespread species in Italy, known until now for Sicily only from Portella Zilla (Peloritani Mountains) (Biondi 1988).

*Longitarsus pellucidus* (Foudras, 1860)

Chorotype - WPA (introduced in North America)

Host plants - CON (*Convolvulus*)

Trophic category - MON

New records - **Siracusa**: Lentini, 08.VI.2000, Leg. I.S.A.; **Messina**: Monti Nebrodi: Portella Maulazzo, 1400 m, 08.VIII.2001, Leg. Baviera C.

**Notes.** Widespread species in Italy, known until now for Sicily only from Portella Zilla (Peloritani Mountains) (Biondi 1988).

*Longitarsus pratensis* (Panzer, 1794)

Chorotype - WPA

Host plants - PLA (*Plantago*)

Trophic category - MON

New records - **Messina**: Città, Forte S. Jachiddu, 28.IV.2010, Leg. Baviera C.; Monte Antennammare, 06.X.2008, Leg. Baviera C.

**Notes.** Very common species in Italy, reported until now for Sicily only from Peloritani and Nebrodi Mounts (Biondi 1988, 2006).

*Longitarsus rectilineatus* (Foudras, 1860)

Chorotype - TEM

Host plants - LAM, THY (*Daphne laureola*)

Trophic category - POL

New records - **Messina**: Monti Peloritani: Pizzo Chiarino, 23.III.2010, on *D. laureola*, Leg. Baviera C.; Lido Spiaggia d'oro, 23.III.2010, Leg. Baviera C.

**Notes.** Species not recorded before for Sicily. *L. rectilineatus* was collected in Peloritani Mounts on *Daphne laureola* together with *L. laureolae*, while the specimens from Mortelle were collected in a sandy dune habitat only with very few Lamiaceae, such as *Calamintha nepeta* and very rare plants of *Origanum vulgare*.

*Longitarsus scaphidioides* Abeille, 1896

Chorotype - NAF

Host plants - PLA (*Plantago*)

Trophic category - MON

New records - **Palermo**: Altofonte, 1.V.1992, Leg. Leonardi C.

**Notes.** Species known in Italy only for Sicily: Pachino (Siracusa) (Leonardi 1975b) and Palermo (Biondi 1989, 2006).

*Longitarsus stragulatus* (Foudras, 1860)

Chorotype - MED

Host plants - AST (*Senecio*, *Hertia*)

Trophic category - OLI

New records - **Palermo**: Altofonte, 1.V.1992, Leg. Leonardi C.

**Notes.** Species known in Italy only for Sardinia and Sicily (Favignana, Egadi Islands) (Biondi 2006).

*Longitarsus strigicollis* Wollaston, 1864

Chorotype - MED

Host plants - CAF (*Dipsacus*, *Scabiosa*)

Trophic category - OLI

New records - **Caltanissetta**: Biviere di Gela, 29.IV.2006, Leg. Baviera C.

**Notes.** Widespread species in Sicily (Leonardi 1973; Biondi 1988, 2005) but not recorded before for Caltanissetta province.

*Longitarsus substriatus* Kutschera, 1863

Chorotype - TUE

Host plants - LAM (*Glecoma*, *Teucrium*)

Trophic category - OLI

New records - **Caltanissetta**: Biviere di Gela, 29.IV.2006, Leg. Baviera C.

**Notes.** Very rare species in Italy, reported for Sicily only from Mistretta (Nebrodi Mounts) (Leonardi 1973).

*Longitarsus succineus* (Foudras, 1860)

Chorotype - PAL (introduced in North America)

Host plants - AST, CON, BOR, LAM, PLA

Trophic category - POL

New records - **Catania**: Monte Etna: versante settentrionale, Piano Provenzana 1800 m, 23.VI.2001, Leg. Baviera C.; ditto, versante meridionale, Adrano, Osservatorio, 1600 m, 12.VI.2011 bosco misto, Leg. Baviera C.; **Palermo**: Isola di Ustica, 28-29.IX.2002, Leg. Baviera C.; **Messina**: Isole Eolie, Vulcano, loc. Piano, 300 m, 24-29.VII.2001, Leg. Baviera C.; Alicudi, 30.IX.2006, Leg. Baviera C.; Filicudi, 01.X.2006, Leg. Baviera C.; Monti Peloritani: Rometta, Gimello, San Leone, 18.X.2007, Leg. Baviera C.; Monte Scuderi, 25.VI.2005, Leg. Baviera C.; Monte Ciccia, 500 m, 11.VI.2009, Leg. Baviera C.; Monte Antennammare, 1133 m, 04.VI.2000, Leg. Baviera C.; ditto 26.XI.2010, vaglio Quercus, Leg. Baviera C.; **Siracusa**: Buccheri, 28.V.2010, Leg. Baviera C.; Portopalo Capo Passero, Isola Correnti, 02.XI.2010, Leg. Baviera C. and Belló C.

**Notes.** Common species in Italy, known until now for Sicily from Nebrodi and Peloritani Mounts (Leonardi 1976; Biondi 1988, 2006), Pantelleria (Pelagic Islands) and Lipari Island (Aeolian Islands) (Leonardi 1976; Ratti 1987; Lo Cascio *et al.* 2006), never recorded from Etna Mount, Ustica Island and others Aeolian Islands.

*Longitarsus suturellus* (Duftschmid, 1825)

Chorotype - ASE

Host plants - AST

Trophic category - OLI

**Notes.** Species reported only generically for Sicily (Biondi 1990, 2005-2013).

*Longitarsus tabidus* (Fabricius, 1775)

Chorotype - PAL

Host plants - SCR (*Verbascum*, rarely *Scrophularia*)

Trophic category - MON

New records - **Messina**: Torre Faro, contr. Granatari, 10.X.1998, Leg. Baviera C.; Monti Peloritani: Montalbano Elicona, Bosco di Malabotta, 25.VII.2006, Leg. Baviera C.; Monte Scuderi, 04.IV.2004, Leg. Baviera C.; Monte Antennammare, 1133 m, 06.X.2008, Leg. Baviera C.; **Siracusa**: Augusta, 08.VII.1997, Leg. Baviera C.; Lentini, 08.VI.2000, Leg. I.S.A.

**Notes.** Widespread species in Italy, reported until now for Sicily only from Egadi Islands (Levanzo and Favignana) (Leonardi 1972b; Daccordi and Ruffo 1975) and Etna Mount (Biondi 2006).

*Longitarsus vilis* Wollaston, 1864

Chorotype - WME

Host plants - PLA (*Plantago*)

Trophic category - MON

**Notes.** Rare species in Sicily, known only from Nebrodi Mounts (Cesaró, 1265 m a.s.l.) (Biondi 1988).

***Mantura* Stephens, 1831**

*Mantura chrysanthemi* (Koch, 1903)

Chorotype - EUM

Host plants - PLG, AST

Trophic category - POL

**Notes.** Very rare species in Italy, recorded only generically from Sicily (Biondi 1990).



*Mantura cylindrica* Miller, 1880

Chorotype - SEU

Host plants - CIS (*Helianthemum*), PLG (*Rumex*, *Polygonum*)

Trophic category - POL

**Notes.** Very rare species in Italy, recorded only generically from Sicily (Biondi 1990).*Mantura lutea* (Allard, 1859)

Chorotype - WME

Host plants - PLG (*Rumex*) (Leonardi pers. comm.)

Trophic category - MON?

**Notes.** Uncommon species in Italy, recorded only generically for Sicily (Biondi 1990).*Mantura mathewsi* (Stephens, 1832)

Chorotype - EUR

Host plants - CIS (*Helianthemum*)

Trophic category - MON

New records - **Messina:** Monti Peloritani: dint. Portella Rizzo, 1100m, 15.VI.1991, Leg. Angelini F.; Monti Peloritani: Monte Antennammare, 30.X.2009, Leg. Baviera C.**Notes.** Uncommon species in Italy, recorded for Sicily from Messina (Luigioni 1929) and Peloritani Mounts (Biondi 1988, 2006).*Mantura pallidicornis* (Waltl 1839)= *Mantura obtusata* (Gyllenhal, 1813) sensu auctorum

Chorotype - EUR

Host plants - PLG (*Rumex*)

Trophic category - MON

New records - **Messina:** Monti Peloritani: dint. Portella Rizzo, 1100m, 15.VI.1991, Leg. Angelini F.; Monti Peloritani: Monte Antennammare, 30.X.2009, Leg. Baviera C.**Notes.** Uncommon but widespecies in Italy, recorded only generically from Sicily (Biondi 1990).***Mniophila* Stephens, 1831***Mniophila muscorum* (Koch, 1803)

Chorotype - EUR

Host plants - Brachytheciaceae (and other families of mosses)

Trophic category - OLI

New records - **Messina:** Monti Nebrodi: San Fratello, in trappola a caduta, 09.IX.2004- 13.X.2005, Leg. Baviera C.**Notes.** Genus and species new for the Sicilian flea beetle fauna. *Mniophila muscorum* has reduced hind wings that limit their dispersal ability. Recent observations revealed that it is most likely an external feeder only on mosses which occur in deciduous and mixed forests (Nadein 2009). The most southern reports of this genus in Palaearctic Region were until now from the Aspromonte Massif (Monte Fistocchio, Sant'Eufemia d'Aspromonte)(Biondi 2006; Nadein 2009).

***Neocrepidodera* Heikertinger, 1911***Neocrepidodera ferruginea* (Scopoli ,1763)

Chorotype - EUR

Host plants - POA, FAB, AST, URT, BOR, PLG

Trophic category - POL

New records - **Messina**: Monti Nebrodi: San Fratello, in trappola a caduta, 09.IX.2004-13.X.2005, Leg. Baviera C.**Notes.** Species known for Sicily only from Etna Mount by Gulli (1961).*Neocrepidodera impressa* (Fabricius 1801)

Chorotype - MED

Host plants - PLU, AST

Trophic category - POL

New records - **Messina**: Monti Nebrodi: San Fratello, in trappola a caduta, 09.IX.2004-13.X.2005, Leg. Baviera C.**Notes.** Species occurring in Northern Sicily, recorded from Madonie, Nebrodi and Peloritani Mounts (Biondi 1982).*Neocrepidodera transversa* (Marsham, 1802)

Chorotype - EUR

Host plants - AST, BOR, API, PLU

Trophic category - POL

New records - **Messina**: Monti Nebrodi: San Fratello, in trappola a caduta, 09.IX.2004-13.X.2005, Leg. Baviera C.**Notes.** Species reported only generically for Sicily (Biondi 2005-2013).***Ochrosis* Foudras, 1861***Ochrosis ventralis* (Illiger, 1807)

Chorotype - EUM

Host plants - BET (*Carpinus betulus*), ANA (*Pistacia lentiscus*)

Trophic category - POL

New records - **Messina**: Monti Peloritani: Monte Scuderi, 1100 m, 25.VI.2005, Leg. Baviera C.; Monte Antennammare, 1100 m, 17.X.2002, Leg. Baviera C.; ditto, 20.VI.2005; ditto, 15.VI.2009; **Siracusa**: Buccheri, 28.V.2010, Leg. Baviera C.; Monti Iblei: Monte Casale, 27.V.2010, Leg. Baviera C.; **Palermo**: Monti Sicani: Bosco Ficuzza 1600 m, 21.VI.2001, Leg. Baviera C.**Notes.** Common species in Sicily and Southern Italy (Heikertinger 1911; Biondi 1988, 2006). For the first time this species is recorded from Sicani and Iblei Mounts.***Orestia* Chevrolat, 1836***Orestia kraatzii* Allard, 1861

Chorotype - SEU

Host plants - LAM, AST, BOR

Trophic category - POL

**Notes.** Uncommon species in Sicily, recorded only from Etna Mount and Peloritani Mounts (Montalbano) (Biondi 1990; Luigioni 1929).

### ***Orthocrepis* Weise, 1888**

*Orthocrepis ruficollis* (Lucas, 1849)

Chorotype - AIM

Host plants - EUP

Trophic category - OLI

New records - **Messina:** Patti, Olivieri, Laghetti di Marinello, 07.VII.2008, Leg. Baviera C.; Trapani: Santa Ninfa, 10.III.2009, Leg. Baviera C., Belló C.

**Notes.** Uncommon species in Italy, recorded until now only generically for Sicily (Biondi 1990).

### ***Phyllotreta* Chevrolat, 1836**

*Phyllotreta astrachanica* Lopatin, 1977

Chorotype - TUE

Host plants - BRA

Trophic category - OLI

**Notes.** Species recorded for Sicily only from Nebrodi Mounts (Biondi 1988).

*Phyllotreta atra* (Fabricius, 1775)

Chorotype - ASE

Host plants - BRA, RES, TRO

Trophic category - POL

**Notes.** Species known only generically for Sicily (Biondi 1990).

*Phyllotreta consobrina* (Curtis, 1837)

Chorotype - EUM

Host plants - BRA

Trophic category - OLI

New records - **Messina:** Monti Nebrodi: Biviere di Cesaró, 1274m, 11.IV.2002, Leg. Baviera C.;

**Trapani:** Monti Sicani: Santa Ninfa, 365 m, 10.III.2009, vaglio *Olea*, Leg. Baviera C. and Belló C.

**Notes.** Uncommon but widespread species in Italy and Sicily (Biondi 1989).

*Phyllotreta corrugata* Reiche, 1858

Chorotype - CEM

Host plants - BRA, RES, TRO

Trophic category - POL

New records - **Messina:** Monti Nebrodi: Biviere di Cesaró, 1274 m, 11.IV.2002, Leg. Baviera C.;

**Trapani:** Isole Egadi, Marettimo, Pizzo Capraro, 22.X.2006, vaglio, Leg. Baviera C.

**Notes.** Species known in Italy by single localities in Campania and Lazio and reported for Sicily only from Agrigento province (Montallegro) (Biondi 1989).

*Phyllotreta crassicornis* Allard, 1866

Chorotype - EUM

Host plants - BRA

Trophic category - OLI

New records - **Palermo**: Billiemi, Contr. Pitrazzi, Grotta Molara ingresso, 07.I.2007, 1♀, Leg. Baviera C.; Madonie, Piano Battaglia (PA) 1600 m, 26.V.1996, 1♂ 1♀, Leg. Angelini; Piano Zucchi (PA) 1100 m, 11.VI.1993, querceto, 1♀, Leg. F. Angelini; **Messina**: M.ti Nebrodi: Floresta 1200 m, Sierra di Baratta, 17.06.2001; 1♂, Leg. D. Siede; Cesaró Mte Soro 1800 m, 16.06.2001, 1♀, Leg. D. Siede.

**Notes.** Species little known in Italy, reported until now for Sicily only from Nebrodi Mounts (Luigioni 1929; Biondi 1988, 1990, 2005-2013).

*Phyllotreta cruciferae* (Goeze, 1777)

Chorotype - PAL (introduced in North America)

Host plants - BRA, RES, TRO

Trophic category - POL

New records - **Palermo**: Monti Sicani: Bisaquino, 550 m, 11.III.2009, Leg. Baviera C.; **Messina**: Monti Peloritani: Campo Italia, 460 m, 12.VII.2010, Gariga impluvio, alla luce, Leg. Infusino; **Siracusa**: Noto, R.N.O. Pantani di Vendicari, 18.VI.2003, Leg. Baviera C.; **Trapani**: Isole Egadi, Levanzo, 23.IV.2007, Leg. Baviera C.

**Notes.** Species very common and widespread in Italy, reported until now for Sicily only from Bosco di Ficuzza and Gela (Biondi 2006). For the first time this species is recorded from Egadi Islands.

*Phyllotreta exclamationis* (Thunberg, 1784)

Chorotype - SIE

Host plants - BRA

Trophic category - OLI

**Notes.** Uncommon species in Italy, reported only generically for Sicily (Porta 1934; Vitale 1935; Biondi 1990, 2005-2013).

*Phyllotreta fallaciosa* Heikertinger, 1941

Chorotype - MED

Host plants - BRA

Trophic category - OLI

**Notes.** Rare species in Italy, only recently recorded from Sardinia and Sicily (Etna and Peloritani Mounts) (Biondi 2006).

*Phyllotreta lativittata* Kutschera, 1860

Chorotype - CAM

Host plants - BRA (rarely CAP)

Trophic category - OLI

**Notes.** Rare species in Italy, known only for Basilicata, Calabria and Sicily (Messina) (Porta 1934; Vitale 1935; Biondi 1990, 2006, 2005-2013).

*Phyllotreta nemorum* (Linnaeus, 1758)

Chorotype - ASE

Host plants - BRA

Trophic category - OLI

**Notes.** Widespread species in Italy, only recently reported for Sicily (Biondi 2005-2013).

*Phyllotreta nigripes* (Fabricius, 1775)

Chorotype - WPA

Host plants - BRA, RES, TRO, CAP

Trophic category - POL

New records - **Messina:** Monti Peloritani: Gualtieri Sicaminó, Li Pantani, 700 m, 04.IV.2010, Leg. Baviera C.; **Catania:** Monte Etna: versante settentrionale, Piano Provenzana, 23.VI.2001, Leg. Baviera C.; ditto, 04.VIII.2000; ditto, versante occidentale, S. Alfio, 1200 m, 02.VI.1999, Leg. Baviera C.; Calatabiano S. Marco, foce Alcantara, 11.III.2011, Leg. Baviera C.

**Notes.** Very common and widespread species in Italy and Sicily (Biondi 1988, 2006).

*Phyllotreta nitidicollis* Weise, 1888

Chorotype - NAF

Host plants - RES, BRA

Trophic category - OLI

**Notes.** Very rare species in Italy, reported only generically for Sicily (Biondi 1990, 2013).

*Phyllotreta ochripes* (Curtis, 1837)

Chorotype - SIE

Host plants - BRA

Trophic category - OLI

**Notes.** Species reported for Sicily only from Nebrodi Mounts (Biondi 2006).

*Phyllotreta parallela* (Boieldieu, 1859)

Chorotype - WME

Host plants - BRA

Trophic category - OLI

New records - **Messina:** Monti Nebrodi: Biviere di Cesaró, 1274 m, 11.IV.2002, Leg. Baviera C.

**Notes.** Rare species in Italy, reported only generically for Sicily (Porta 1934; Vitale 1920; Biondi 1990).

*Phyllotreta procera* (Redtenbacher, 1849)

Chorotype - AFM

Host plants - RES (rarely CAP or BRA)

Trophic category - OLI

New records - **Catania:** Calatabiano, San Marco, Foce Fiume Alcantara, 19.V.2010 Leg. Baviera C.; **Messina:** città, Forte S. Jachiddu, 23.III.2010, Leg. Baviera C., Torre Faro, Contrada Granatari, 27.V.2000, Leg. Baviera C.; ditto, 15. VI. 2008, alla luce; **Trapani:** Castellammare del Golfo, R.N.O. Zingaro, 26- 29.III.2003, Leg. Baviera C.

**Notes.** Locally common species reported until now for Sicily only from Lipari, Favignana, Pantelleria and Lampedusa (Daccordi and Ruffo 1975; Lo Valvo and Massa 1995; Biondi 2006; Lo Cascio *et al.* 2006).

*Phyllotreta punctulata* (Marsham, 1802)= *Phyllotreta aerea* Allard, 1859

Chorotype - EUR (introduced in North America)

Host plants - BRA (rarely RES)

Trophic category - OLI

New records - **Messina**: Francavilla di Sicilia, Fiume Alcantara, Cuba Bizantina, 19.V.2010, Leg. Baviera C.; Monti Peloritani: Monte Antennammare, 26.IV.2000, Leg. Baviera C.; Monti Nebrodi: Biviere di Cesaró, 1274m, 11.IV.2002, Leg. Baviera C.; **Siracusa**: Augusta, 08.VII.1997; Lentini, 08.VI.2000, Leg. I.S.A.; **Palermo**: Madonie: Piano Battaglietta, 1600 m, 16.V.2008, Leg. Baviera C.; **Trapani**: Paceco, R.N.O. Saline di Trapani e Paceco, Fiume Lenzi Baiata, 29.IV.2004, Leg. Baviera C.; ditto, Salina Vecchia; Castellammare del Golfo, R.N.O. Zingaro, 22- 24.IV.2003, Leg. Baviera C.

**Notes.** Common species in Italy, reported until now for Sicily only from Etna Mount by Gulli (1961)[as *Phyllotreta aerea*], Madonie, Piano Zucchi and Lipari Island (Biondi 2006; Lo Cascio *et al.* 2006).

*Phyllotreta rufitarsis* Allard, 1859

Chorotype - AFM

Host plants - RES, BRA

Trophic category - OLI

New records - **Siracusa**: fra Noto e Palazzolo Acreide, 1♀, 8.V.1992, Leg. Leonardi C..

**Notes.** Species known in Italy generically for Sicily and Linosa (Heikertinger 1941) and Lampedusa (Lo Valvo and Massa 1995; Biondi 2006).

*Phyllotreta rugifrons* Küster, 1849

Chorotype - MED

Host plants - BRA (*Nasturtium officinale*)

Trophic category - MON

New records - **Messina**: Francavilla di Sicilia, Fiume Alcantara, Cuba Bizantina, 29.III.2010, Leg. Baviera C., ditto, 19.IV.2010; ditto, 19.V.2010.

**Notes.** Uncommon species in Italy, reported until now for Sicily only from Palermo (Biondi 2006).

*Phyllotreta undulata* Kutschera, 1860

Chorotype - PAL (introduced in North America and Australian region)

Host plants - BRA (rarely RES or TRO)

Trophic category - OLI

**Notes.** Uncommon species in Sicily, recorded from Peloritani Mounts (Messina, Rodì and Castoreale) (Vitale 1920).

*Phyllotreta variipennis* (Boieldieu, 1859)

Chorotype - MED

Host plants - BRA, RES, CAP

Trophic category - POL

New records - **Messina**: Monti Peloritani: San Pier Niceto, 04.IV.2010, Leg. Baviera C.; Massa S. Giovanni, 23.VIII.1997, Leg. Baviera C.; Isole Eolie: Salina, 10-12.V.2007, Leg. Baviera C.

**Notes.** Apparently uncommon species in Sicily, reported only from Ustica Island (Luigioni 1929) and Peninsula Magnisi (Siracusa) (Luigioni 1929; Biondi 2006). For the first time this species is recorded from Peloritani Mounts and Aeolian Islands.

### ***Podagrica Chevrolat, 1836***

*Podagrica fuscicornis* (Linnaeus, 1766)

Chorotype - MED

Host plants - MAL

Trophic category - OLI

New records - **Messina:** Monti Nebrodi: Floresta, Sorgente S. Giacomo 29.V.2010, Leg. Baviera C.; Francavilla di Sicilia, Fiume Alcantara, La Gurne, 19.IV.2010, Leg. Baviera C.; Monti Peloritani: Monte Antennammare, 27.VI.1997, Leg. Baviera C.; ditto, 04.VI.2000; Musolino, 700 m, 04.VI.2000, Leg. Baviera C.; Pizzo Chiarino, 06.VI.2004, Leg. Baviera C.; **Palermo:** Madonie, Piano Zucchi, 03.VI.2000, Leg. Baviera C.; Madonie, località La Liccia, 29.V.2007, Leg. Baviera C.

**Notes.** Widespread species in Italy, recorded until now for Sicily only from Termini Imerese (Palermo) (Ciofalo 1886).

*Podagrica malvae* (Illiger, 1807)

Chorotype - TEM

Host plants - MAL

Trophic category - OLI

New records - **Messina:** Monti Peloritani: Monte Antennammare, 1133 m, 26.XI.2010, vaglio *Quercus*, Leg. Baviera C.; **Siracusa:** Lentini, 17.V.2000, Leg. I.S.A.; Portopalo di Capo Passero, 01.XI.2010 Leg. Baviera C.; **Palermo:** Capaci, 17.IV.1973, Leg. Romano M.; **Trapani:** Castellammare del Golfo, R.N.O. Zingaro, 26-29.III.2003, Leg. Baviera C., ditto, 19-21.V.2003.

**Notes.** Very common and widespread species in Italy, recorded until now for Sicily only from Termini Imerese (Palermo) (Ciofalo 1886), Etna Mount (Gulli 1961), Nebrodi Mounts (Biondi 1988), Egadi, Ustica and Pelagie Islands (Luigioni 1929; Lo Valvo and Massa 1995; Daccordi and Ruffo 1975). The Italian populations of this species are to attribute to the ssp. *semirufa* (Kuster 1847).

*Podagrica menetriesi* (Faldermann, 1837)

Chorotype - CAE

Host plants - MAL

Trophic category - OLI

**Notes.** Widespread species in Italy, recorded from Sicily only from Nebrodi Mounts (Cesaró) (Biondi 1988).

### ***Psylliodes Latreille, 1829***

*Psylliodes algirica* Allard, 1859

Chorotype - WME

Host plants - FAG (*Quercus*)

Trophic category - OLI

New records - **Trapani:** Castellammare del Golfo, R.N.O. Zingaro, 22- 24.IV.2003, Leg. Baviera C.;

Castelvetrano, Vallone Zangara, 28.V.2007, Leg. Baviera C.; **Ragusa**: Giarratana, 500 m, 04.V.2010, Leg. Baviera C.

**Notes.** Species relatively common in Sicily (Leonardi 1972a, 1975a; Heikertinger 1926; Biondi 2006), recorded also from Pantelleria (Ratti 1987).

*Psylliodes ausoniae* Leonardi, 2013

Chorotype - SEU

Host plants - FAG (*Quercus*), BET (*Ostrya*)

Trophic category - POL

New records - **Trapani**: Castellammare del Golfo, R.N.O. Zingaro, 22- 24.IV.2003, Leg. Baviera C.; Castelvetrano, Vallone Zangara, 28.V.2007, Leg. Baviera C.; **Ragusa**: Giarratana, 500 m, 04.V.2010, Leg. Baviera C.

**Notes.** Species recently described, known from Sicani, Nebrodi and Iblei Mounts (Leonardi 2013).

*Psylliodes brisouti* Bedel, 1898

Chorotype - EUR

Host plants - BRA

Trophic category - OLI

**Notes.** Uncommon species in Italy, known for Sicily only from Sicani and Madonie Mounts (Leonardi 1975a; Biondi 2006).

*Psylliodes caneparii* Leonardi, 2007

Chorotype - WME (SISA endemic type)

Host plants - BRA (*Erucastrum virgatum*)

Trophic category - MON

New records - **Messina**: Isole Eolie: Vulcano, 09-10.V.2007, Leg. Baviera C.; Monti Peloritani: San Pier Niceto, 350 m, 19.VI.2011; Leg. Baviera C.

**Notes.** Species recently described from Calabria and North-Eastern Sicily (Aeolian Islands, Lipari) (Leonardi 2007).

*Psylliodes chalcomera* (Illiger, 1807)

Chorotype - PAL

Host plants - AST

Trophic category - OLI

New records - **Messina**: Monti Peloritani: Monte Scuderi, 22.IV.2004, Leg. Baviera C.; Isole Eolie: Vulcano, 09- 10.V.2007, Leg. Baviera C.; **Catania**: Monte Etna, Southern Slope, Monte Sona, 1350m, 13.VII.1949, Leg. Hartig F.

**Notes.** Species reported for Sicily also from Enna and Palermo (Leonardi 1975a). For the first time this species is recorded for Aeolian Islands.

*Psylliodes chrysocephala* (Linnaeus, 1758)

Chorotype - WPA (introduced in North America)

Host plants - BRA

Trophic category - OLI

New records - **Messina**: Francavilla di Sicilia, Fiume Alcantara, Cuba Bizantina, 28.V.2010, Leg. Baviera C.; **Palermo**: Monti Sicani: Palazzo Adriano, 900 m, 24.VII.2006, Leg. Baviera C.



**Notes.** Common and widespread species in Italy and Sicily (Luigioni 1929; Leonardi 1975a; Biondi 1988, 2006), also recorded from Pantelleria (Ratti 1987).

*Psylliodes circumdata* Redtenbacher, 1842)

Chorotype - EUM

Host plants - BRA (FAG as “refugial” plants)

Trophic category - OLI

New records - **Messina:** Francavilla di Sicilia, Fiume Alcantara, Cuba Bizantina, 19.V.2010, Leg. Baviera C.; Torre Faro, Contrada Granatari, 12.VII.2003, Leg. Baviera C.; Monti Peloritani: Monte Scuderi, 1100 m, 22.V.2004, Leg. Baviera C.; Bosco di Malabotta, 23.VI.2006, Leg. Baviera C.; **Siracusa:** Lentini, 05.V.2000, Leg. I.S.A.; **Trapani:** Selinunte, Foce Morone, 09.IV.1998, Leg. Baviera C.; Isole Egadi, Marettimo, 16-18.IV.2006, Leg. Baviera C.; ditto, Favignana, 3.IV.1990, Leg. Bologna M.

**Notes.** Uncommon species in Italy, known until now for Sicily only from Madonie and Syracuse (Leonardi 1975a).

*Psylliodes cuprea* (Koch, 1803)

Chorotype - CEM

Host plants - BRA

Trophic category - OLI

New records - **Messina:** Francavilla di Sicilia, Fiume Alcantara, Cuba Bizantina, 19.V.2010, Leg. Baviera C.; **Catania:** Monte Etna, versante Ovest, Randazzo, Maletto, 1000m 12.V.2009, Leg. Baviera C.; **Agrigento:** Bisacquino, 28.V.2007, Leg. Baviera C.; ditto, 19.III.2008; **Ragusa:** Monti Iblei: Giarratana, S. Rosalia, 15.IV.2010. 377 m. Leg. Baviera C., and Belló C.; **Palermo:** Madonie, Pomieri, 1400 m, 23.IX.2010, Leg. Baviera C.

**Notes.** Common and widespread species in Sicily (Ciofalo 1886; Gulli 1961; Leonardi 1975a; Biondi 1988, 2006), also recorded from Pantelleria (Ratti 1987).

*Psylliodes fusiformis* (Illiger, 1807)

Chorotype - WME

Host plants - BRA

Trophic category - OLI

New records - **Messina:** Francavilla di Sicilia, Fiume Alcantara, Cuba Bizantina, 28.V.2010, Leg. Baviera C.; ditto, 19.V.2010; Isole Eolie: Salina, 10- 12.V.2007, Leg. Baviera C.; Monti Peloritani: Pizzo Chiarino, 845 m, 29.V.2011 Leg. Baviera C.; **Siracusa:** Lentini, 17.V.2000, Leg. I.S.A.; Monti Iblei, Monte Casale, 27.V.2010, Leg. Baviera C.; **Caltanissetta:** Biviere di Gela, 05.IV.1994, Leg. Baviera C.; **Trapani:** Isole Egadi, Levanzo, 23.IV.2007, Leg. Baviera C.; ditto, 4.IV.1990, Leg. Bologna M.

**Notes.** Species particularly common in Sicily (Leonardi 1970, 1975a; Biondi 2006), known also from Pantelleria Island (Ratti 1987) and Lipari Island (Aeolian Islands) (Lo Cascio *et al.* 2006).

*Psylliodes gibbosa* Allard, 1860

Chorotype - MED

Host plants -POA

Trophic category - OLI

**Notes.** Locally common and widespread species in Italy, reported for Sicily only from Messina (Leonardi 1975a).

*Psylliodes heikertingeri* Jacobson, 1922

Chorotype - NAF

Host plants -BRA

Trophic category - OLI

New records - **Trapani:** Isole Egadi, Marettimo, 16- 18.IV.2006, Leg. Baviera C.; ditto, Punta Troia, 5.IV.1990, Leg. Osella B.G.; **Siracusa:** Porto Palo di Capo Passero, Penisola Magnisi and Noto (teste Leonardi C.).

**Notes.** Rare species recorded in Italy only for Sicily. Other localities for this species are: Favignana and Levanzo (Egadi Islands), Pachino (Syracuse) and Agrigento (Luigioni 1929; Leonardi 1971; Biondi 2006).

*Psylliodes hospes* Wollaston, 1854

Chorotype - MED

Host plants - BRA

Trophic category - OLI

New records - **Messina:** Peloritani: Bosco di Malabotta, 03.VI.2008, Leg. Baviera C.; Isole Eolie: Vulcano, 09-10.V.2007, Leg. Baviera C.; **Trapani:** Isole Egadi, Levanzo, 4.IV.1990, Leg. Bologna M.

**Notes.** Species known in Italy only for Sardinia and Sicily (Favignana and Lampedusa Islands) (Daccordi and Ruffo 1975; Lo Valvo and Massa 1995).

*Psylliodes hyoscyami* (Linnaeus 1758)

Chorotype - ASE

Host plants - SOL (*Hyoscyamus*, *Atropa*)

Trophic category - OLI

**Notes.** Uncommon but widespread species in Italy, known in Sicily only from Nebrodi Mounts (Ancipa Lake) (Leonardi 1975a; Biondi 2006).

*Psylliodes inflata* Reiche, 1858

Chorotype - TUM

Host plants - POA

Trophic category - POL

New records - **Messina:** San Saba, Capo Rasocolmo, in pit-fall trap, 01-19.X.2004, Leg. Baviera C.; ditto, 2-20.XII.2004; Lido Spiaggia d'oro, 28.IV.2010, Leg. Baviera C.; **Catania:** Etna, versante Sud, Castagneti di Pedara, 900-1100 m, 26.V.1949, Leg. Hartig F. and Griesch A.; ditto, versante ovest, Randazzo, Maletto, 1000 m, Leg. Baviera C.; **Trapani:** Isole Egadi, Favignana, 19.IV.2007, Leg. Baviera C.; ditto, 9.XII.1993, Leg. Poggi R.; ditto, Montagna Grande, 27-28.IV.1991, Leg. Osella B.G.

**Notes.** Species known in Italy only for Sardinia and Sicily (Leonardi 1970, 1975a; Biondi 2006). *P. inflata* is recorded also from Pantelleria and Linosa Islands (Ratti 1987; Lo Valvo and Massa 1995).

*Psylliodes instabilis* Foudras, 1860

Chorotype - EUR

Host plants - BRA

Trophic category - OLI

New records - **Messina**: Francavilla di Sicilia, Fiume Alcantara, Cuba Bizantina, 19.IV.2010, Leg. Baviera C.; Monti Nebrodi: Floresta, Sorgente S. Giacomo 19.IV.2010, Leg. Baviera C.

**Notes.** Uncommon but widespread species in Italy, recorded only generically from Sicily (Biondi 1990, 2006).

*Psylliodes isatidis* Heikertinger, 1912

Chorotype - CAE

Host plants - BRA(*Isatis*)

Trophic category - MON

**Notes.** Uncommon but widespread species in Italy, reported for Sicily from Messina, Nebrodi and Etna (Leonardi 1975a; Biondi 2006).

*Psylliodes isatidis* Kutschera, 1864

Chorotype - SEU

Host plants - FAG (*Quercus*), BET (*Corylus*)

Trophic category - POL

New records - **Catania**: Monte Etna, versante Nord, Piano Provenzana, 1800 m, 23.VI.2001, Leg. Baviera C.; ditto, versante Est, Bosco Cerrita, 24.VII.2004, Leg. Baviera C.

**Notes.** Widespread species in Italy, common especially in Northern Sicily (Leonardi 1978; Biondi 1988, 2005).

*Psylliodes laticollis* Kutschera, 1864

Chorotype - EUM

Host plants - BRA

Trophic category - OLI

**Notes.** Species reported only generically for Sicily (Heikertinger 1912; Leonardi 1970, 1975b; Biondi 1988).

*Psylliodes leonhardi* Heikertinger, 1926

Chorotype - SEU (SISA endemic type)

Host plants - POA, FAG

Trophic category - POL

**Notes.** Uncommon species in Italy, reported for Sicily only from Bosco di Ficuzza (Palermo) (Luigioni, 1929; Heikertinger, 1926).

*Psylliodes libertii* Leonardi, 2013

Chorotype - SEU

Host plants - FAG (*Quercus*), BET (*Ostrya*)

Trophic category - POL

**Notes.** Species recently described from Peloritani, Etna and Nebrodi Mounts and Alcantara River (Leonardi 2013).

*Psylliodes luteola* (O. F. Muller, 1776)

Chorotype - EUM

Host plants - FAG (*Quercus*), SOL (*Solanum*)

Trophic category - POL

New records - **Messina**: Francavilla di Sicilia, Fiume Alcantara, Cuba Bizantina, 28.V.2010, Leg. Baviera C.; Monti Peloritani: Monte Antennammare, 1100 m, 27.VI.1997, Leg. Baviera C.; Monte Scuderi, 1100 m, 25.VI.2005, Leg. Baviera C.; Bosco di Malabotta, 25.VI.2005, Leg. Baviera C.; Monti Nebrodi: Sella Tre Arie, 1400 m, 03.VII.2009, Leg. Baviera C.; Biviere di Cesaró, 1100 m, 14.V-01.VII.2005, in pit-fall trap, Leg. Baviera C.

**Notes.** Common species occurring mainly in Northern Sicily (Madonie, Nebrodi and Sicani)(Leonardi 1975a).

*Psylliodes marcida* (Illiger, 1807)

Chorotype - EUM

Host plants - BRA (*Cakile maritima*)

Trophic category - MON

New records - **Messina**: Isole Eolie, Stromboli, 07- 09.IV.2006, Leg. Baviera C.; **Trapani**: Paceco, R.N.O. Saline di Trapani e Paceco, Salina Lenzi Baiata, 29.IV.2004, Leg. Baviera C.; **Agrigento**: Eraclea Minoa, 31.VIII.2008, Leg. Osella B.G.; Pelagie, Lampedusa, Spiaggia dei Conigli, 30.IV.1991, Leg. Poggi R.

**Notes.** Species known until now for Sicily only from Messina (Fiumara di Tono) and Syracuse (Melilli) (Leonardi 1975b). For the first time this species is recorded for Aeolian Islands and Lampedusa.

*Psylliodes maroccana* Heikertinger, 1916

Chorotype - WME

Host plants - BRA (*Cakile maritima*, *Lobularia maritima*, *Matthiola sinuata*)

Trophic category - OLI

New records - **Messina**: Capo Rasocolmo, S. Saba, 26.IV.2010, Leg. Baviera C.; **Ragusa**: Marina di Modica, 23.IV.2004, Leg. Leonardi C.

**Notes.** Species known until now for Sicily only from Linosa Island (Lo Valvo and Massa 1995).

*Psylliodes milleri* Kutschera, 1864

Chorotype - MED

Host plants - BRA (*Erysimum*)

Trophic category - MON

New records - **Messina**: Monti Peloritani: Monte Antennammare, 1100 m, 15.VI.2009, Leg. Baviera C.; **Trapani**: Castellammare del Golfo, R.N.O. Zingaro, 22- 24.IV.2003, Leg. Baviera C.

**Notes.** Uncommon species in Italy, known for the most part of Sicily (Leonardi 1971, 1975b; Biondi 2005).

*Psylliodes napi* (Fabricius, 1792)

Chorotype - SIE

Host plants - BRA

Trophic category - OLI

New records - **Messina**: Monti Peloritani: Bosco Acquamenta, 1150 m, 11.X.2009, Leg. Baviera C.; Monte Ciccica, 11.VI.2009, Leg. Baviera C.; Pizzo Chiarino, 845 m, 29.V.2011, Leg. Baviera C.; **Catania**: Monte Etna: versante Est, Bosco Cerrita dint., 1500 m, 01.VII.2004, Leg. Baviera C.; versante Nord, Piano Provenzana, 15.VI.2003, Leg. Baviera C.; **Palermo**: Madonie: Piano Battaglietta, 1600 m, 23.IX.2010, Leg. Baviera C.

**Notes.** Common and widespread species in Italy, reported for Sicily from Nebrodi and Madonie Mounts (Leonardi 1975a; Biondi 1988).

*Psylliodes obsкуроaenea* Rosenhauer, 1856

Chorotype - WME

Host plants - FAG (*Quercus*)

Trophic category - MON?

New records - **Messina:** Monti Peloritani: Monte Antennammare, 1100 m, 06.X.2008, vaglio Quercus, Leg. Baviera C.

**Notes.** Locally common species in Italy, reported for Sicily from Madonie, Peloritani and Etna Mounts (Leonardi 1972a, 1978).

*Psylliodes pallidipennis* Rosenhauer, 1856

Chorotype - MED

Host plants - BRA, RES

Trophic category - OLI

New records - **Messina:** Isole Eolie: Stromboli, 07- 09.IV.2006, Leg. Baviera C.; **Ragusa:** Marina di Modica, 23.IV.2004, Leg. Leonardi C.; **Trapani:** Selinunte, Foce Morone, 09.IV.1998, Leg. Baviera C.

**Notes.** Uncommon species in Italy, reported until now for Sicily only from Pantelleria (Luigioni 1929; Ratti 1987).

*Psylliodes puncticollis* Rosenhauer, 1856

Chorotype - MED

Host plants - AST (*Centaurea*), APO (*Apocynum*), ONA (*Oenothera*), POA (*Ammophila*, *Calagrostis*, *Stipa*)

Trophic category - POL

New records - **Messina:** Mortelle Lido, 25.XII.1998, Leg. Baviera C.; ditto, 28.IV.2010, ditto, in trappole a caduta, 01- 19. X.2004; ditto, 17.I- 01- II.2005; ditto, 02-20.XII.2004; ditto 19.XI-02.XII.2004; **Ragusa:** Marina di Modica, 23.IV.2004, Leg. Leonardi C.

**Notes.** Uncommon but widespread species in Italy, recorded only generically from Sicily (Biondi 1990).

*Psylliodes pyritosa* Kutschera, 1864

Chorotype - MED

Host plants - BRA

Trophic category - MON

New records - **Messina:** Monti Peloritani: Monte Antennammare, 04.VI.2000, Leg. Baviera C.; ditto, 15.V.2002; Campo Italia, 476 m, 07.VIII.2010, Rometta, Gimello, San Leone, 29.IV.2000, Leg. Baviera C.; Isole Eolie Vulcano, 24-29.VI.2001, Leg. Baviera C.; ditto, 09-10.V.2007; Francavilla di Sicilia, Fiume Alcantara, Le Gurne, 19.IV.2010, Leg. Baviera C.; **Trapani:** Isole Egadi: Favignana, Montagna Grande, 27-28.IV.1991, Leg. Osella B.G.

**Notes.** Specie reported for Sicily also from Catania (Pedara) and Madonie Mounts (Pizzo Carbonara and Piano Battaglia), Palermo province (Leonardi 1975b; Biondi 2005) and Lipari Island (Lo Cascio *et al.* 2006).

*Psylliodes ruffoi* Leonardi, 1975

Chorotype - SEU (SISA endemic type)

Host plants - POA

Trophic category - OLI

New records - **Messina**: Monti Peloritani: Monte Antennammare, 1100 m, 2.I.2009, vaglio Quercus, Leg. Baviera C.; ditto, 06.X.2008; Monte Scuderi, 1100 m, 22.V.2004, Leg. Baviera C.; ditto, 25.VI-29.XI.2005, in pit-fall trap; San Pier Niceto, Li Pantani, 20.VI.2010, 700 m., vaglio Castanea Leg. Baviera C.; Monti Nebrodi: Floresta, 1100 m, 24.VI.2007 Leg. Baviera C.; **Catania**: Calatabiano, San Marco, Foce Alcantara, 19.V.2010, Leg. Baviera C.; **Siracusa**: Monti Iblei: Ferla 675 m, 14.IV.2010, vaglio Olea, Leg. Baviera and Belló.

**Notes.** Locally common species in Southern Apennine, recorded for Sicily from Peloritani, Nebrodi and Madonie Mounts (Leonardi 1975a; Biondi 1988).

*Sphaeroderma Stephens, 1831**Sphaeroderma rubidum* (Graells, 1858)

Chorotype - EUM

Host plants - AST

Trophic category - OLI

New records - **Messina**: San Saba, Capo Rasocolmo, 20.IV.2010, Leg. Baviera C.; Aeolian Islands: Vulcano, 09-10.V.2007, Leg. Baviera C.; Salina, 10-12.V.2007, Leg. Baviera C.; Monti Peloritani: Pizzo Chiarino, 845 m, 29.V.2011, Leg. Baviera C.; Monte Antennammare, 1120 m, 29.V.2011, Leg. Baviera C.; Monti Nebrodi: Monte Soro, 1800 m, 27.VI.2008, Leg. Baviera C.; **Catania**: Monte Etna: Versante Est, Bosco Cerrita 1500 m, 01.VII.2004, Leg. Baviera C.

**Notes.** Species known for Sicily only from Etna Mount by Gulli (1961).

*Sphaeroderma testaceum* (Fabricius, 1775)

Chorotype - EUR (introduced in North America)

Host plants - AST

Trophic category - OLI

New records - **Messina**: Monti Nebrodi: Biviere di Cesaró, 1283 m, 24.VI.2006, Leg. Baviera C.; **Palermo**: Monti Sicani: Bosco della Ficuzza, 700 m, 6.VI.1991, Leg. Angelini F.

**Notes.** Species known for Sicily only from Etna Mount by Gulli (1961).

TABLE 1. Checklist of the Alticini of Sicily

SPECIES	AUTHORITY	COROTYPE	NEW RECORD
<i>Altica ampelophaga</i>	(Guérin- Meneville, 1858)	CEM	
<i>Altica carduorum</i>	(Guérin- Meneville, 1858)	ASE	X
<i>Altica impressicollis</i>	(Reiche, 1862)	EUM	
<i>Altica oleracea</i>	(Linnaeus, 1758)	ASE	
<i>Altica palustris</i>	(Linnaeus, 1758)	ASE	
<i>Altica quercetorum</i>	Foudras, 1860	EUR	
<i>Altica tamaricis</i>	Schrank, 1785	WPA	
<i>Aphthona carbonaria</i>	Rosenhauer, 1856	WME	
<i>Aphthona euphorbiae</i>	(Schrank, 1781)	PAL	

*Continued on next page*

Table 1 – Continued from previous page

SPECIES	AUTHORITY	COROTYPE	NEW RECORD
<i>Aphthona flaviceps</i>	Allard, 1859	WPA	
<i>Aphthona herbigrada</i>	(Curtis, 1837)	EUR	
<i>Aphthona nigriceps</i>	(Redtenbacher, 1842)	EUM	
<i>Aphthona nonstriata</i>	(Goeze, 1777)	TUE	
<i>Aphthona ovata</i>	Foudras, 1860	EUR	
<i>Aphthona punctiventris</i>	Mulsant and Rey, 1874	WME	
<i>Aphthona pygmaea</i>	(Kutschera, 1861)	EUM	
<i>Aphthona semicyanea</i>	Allard, 1859	ASE	
<i>Aphthona sicelidis</i>	Weise, 1888	MED	
<i>Aphthona variolosa</i>	Foudras, 1860	WME	
<i>Aphthona venustula</i>	(Kutschera, 1861)	EUR	
<i>Apteropeda orbiculata</i>	(Marsham, 1802)	EUR	
<i>Arrhenocoela lineata</i>	(Rossi, 1790)	MED	
<i>Batophila aerata</i>	(Marsham, 1802)	EUM	
<i>Chaetocnema arida</i>	Foudras, 1860	EUM	
<i>Chaetocnema aridula</i>	(Gyllenhal, 1827)	PAL	
<i>Chaetocnema chlorophana</i>	(Duftschmid, 1825)	TEM	
<i>Chaetocnema concinna</i>	(Marsham, 1802)	PAL	
<i>Chaetocnema conducta</i>	(Motschulsky, 1838)	AFM	
<i>Chaetocnema hortensis</i>	(Geoffroy, 1785)	ASE	
<i>Chaetocnema obesa</i>	(Boieldieu, 1859)	CEM	X
<i>Chaetocnema procerula</i>	(Rosenhauer, 1856)	EUM	
<i>Chaetocnema punctifrons</i>	(Abeille, 1907)	WME	
<i>Chaetocnema scheffleri</i>	(Kutschera, 1864)	EUM	
<i>Chaetocnema tibialis</i>	(Illiger, 1807)	PAL	
<i>Crepidodera aurata</i>	(Marsham, 1802)	PAL	
<i>Crepidodera aurea</i>	(Geoffroy, 1785)	ASE	
<i>Dibolia chevrolati</i>	Allard, 1861	MED	
<i>Dibolia cryptocephala</i>	(Koch, 1803)	EUR	
<i>Dibolia maura</i>	Allard, 1860	NAF	
<i>Dibolia occultans</i>	(Koch, 1803)	EUM	
<i>Dibolia timida</i>	(Illiger, 1807)	EUR	
<i>Dibolia tyrrhenica</i>	Mohr, 1981	MED	
<i>Epitrix atropae</i>	Foudras, 1860	EUM	
<i>Epitrix hirtipennis</i>	(Melsheimer, 1847)	Introduced	X
<i>Hermaphysa cicatrix</i>	(Illiger, 1807)	EUR	
<i>Longitarsus aeneicollis</i>	(Faldermann, 1837)	WPA	
<i>Longitarsus aeneus</i>	Kutschera, 1862	MED	
<i>Longitarsus aeruginosus</i>	(Foudras, 1860)	EUM	
<i>Longitarsus albineus</i>	(Foudras, 1860)	TEM	
<i>Longitarsus albus</i>	(Allard, 1866)	NAF	
<i>Longitarsus anacardius</i>	(Allard, 1866)	WME	
<i>Longitarsus anchusae</i>	(Paykull, 1793)	ASE	
<i>Longitarsus atricillus</i>	(Linnaeus, 1761)	PAL	
<i>Longitarsus australis</i>	(Mulsant and Rey, 1874)	EUM	
<i>Longitarsus ballotae</i>	(Marsham, 1802)	CAM	

Continued on next page

Table 1 – *Continued from previous page*

SPECIES	AUTHORITY	COROTYPE	NEW RECORD
<i>Longitarsus brisouti</i>	Heikertinger, 1912	EUR	
<i>Longitarsus candidulus</i>	(Foudras, 1860)	MED	
<i>Longitarsus cerinthes</i>	(Schrank, 1798)	EUM	
<i>Longitarsus codinai</i>	Madar and Madar, 1965	WME	
<i>Longitarsus corynthius</i>	(Reiche and Saulcy, 1858)	MED	
<i>Longitarsus curtus</i>	(Allard, 1860)	ASE	
<i>Longitarsus echii</i>	(Koch, 1803)	EUM	
<i>Longitarsus exsoletus</i>	Linnaeus, 1758)	CAE	
<i>Longitarsus fallax</i>	Weise, 1888	CAM	
<i>Longitarsus foudrasi</i>	Weise, 1893	EUM	
<i>Longitarsus frontosus</i>	Normand, 1947	WME	
<i>Longitarsus gracilis</i>	Kutschera, 1864	EUR	
<i>Longitarsus helvolus</i>	Kutschera, 1863	SEU	
<i>Longitarsus jacobaeae</i>	(Waterhouse, 1858)	CAE	
<i>Longitarsus juncicola</i>	(Foudras, 1860)	TEM	
<i>Longitarsus lateripunctatus</i>	Rosenhauer, 1856	EUM	
<i>Longitarsus laureolae</i>	Biondi, 1988	SEU	
<i>Longitarsus linnaei</i>	(Duftschmid, 1825)	TUE	
<i>Longitarsus luridus</i>	(Scopoli, 1763)	PAL	
<i>Longitarsus lycopi</i>	(Foudras, 1860)	TEM	
<i>Longitarsus melanocephalus</i>	(De Geer, 1775)	ASE	
<i>Longitarsus melanocephalus</i>	(De Geer, 1775)	ASE	
<i>Longitarsus monticola</i>	Kutschera, 1863	CAE	X
<i>Longitarsus nanus</i>	(Foudras, 1860)	EUM	
<i>Longitarsus niger</i>	(Koch, 1803)	EUR	
<i>Longitarsus nigrofasciatus</i>	(Goeze, 1777)	TEM	
<i>Longitarsus obliteratoides</i>	Gruev, 1973	EUR	
<i>Longitarsus ochroleucus</i>	(Marsham, 1802)	WPA	
<i>Longitarsus parvulus</i>	(Paykull, 1799)	PAL	
<i>Longitarsus pellucidus</i>	(Foudras, 1860)	WPA	
<i>Longitarsus pratensis</i>	(Panzer, 1794)	WPA	
<i>Longitarsus rectilineatus</i>	(Foudras, 1860)	TEM	X
<i>Longitarsus scaphidioides</i>	Abeille, 1896	NAF	
<i>Longitarsus stragulatus</i>	(Foudras, 1860)	MED	
<i>Longitarsus strigicollis</i>	Wollaston, 1864	MED	
<i>Longitarsus substriatus</i>	Kutschera, 1863	TUE	
<i>Longitarsus succineus</i>	(Foudras, 1860)	PAL	
<i>Longitarsus suturellus</i>	(Duftschmid, 1825)	ASE	
<i>Longitarsus tabidus</i>	(Fabricius, 1775)	PAL	
<i>Longitarsus vilis</i>	Wollaston, 1864	WME	
<i>Mantura chrysanthemii</i>	(Koch, 1903)	EUM	
<i>Mantura cylindrica</i>	Miller, 1880	SEU	
<i>Mantura lutea</i>	(Allard, 1859)	WME	
<i>Mantura mathewsi</i>	(Stephens, 1832)	EUR	
<i>Mantura pallidicornis</i>	(Waltl, 1839)	EUR	
<i>Mniophila muscorum</i>	(Koch, 1803)	EUR	X

*Continued on next page*



Table 1 – Continued from previous page

SPECIES	AUTHORITY	COROTYPE	NEW RECORD
<i>Neocrepidodera ferruginea</i>	(Scopoli, 1763)	EUR	
<i>Neocrepidodera impressa</i>	(Fabricius, 1801)	MED	
<i>Neocrepidodera transversa</i>	(Marsham, 1802)	EUR	
<i>Ochrosis ventralis</i>	(Illiger, 1807)	EUM	
<i>Orestia kraatzi</i>	Allard, 1861	SEU	
<i>Orthocrepis ruficollis</i>	(Lucas, 1849)	AIM	
<i>Phyllotreta astrachanica</i>	Lopatin, 1977	TUE	
<i>Phyllotreta atra</i>	(Fabricius, 1775)	ASE	
<i>Phyllotreta consobrina</i>	(Curtis, 1837)	EUM	
<i>Phyllotreta corrugata</i>	Reiche, 1858	CEM	
<i>Phyllotreta crassicornis</i>	Allard, 1866	EUM	
<i>Phyllotreta cruciferae</i>	(Goeze, 1777)	PAL	
<i>Phyllotreta exclamationis</i>	(Thunberg, 1784)	SIE	
<i>Phyllotreta fallaciosa</i>	Heikertinger, 1941	MED	
<i>Phyllotreta lativittata</i>	Kutschera, 1860	CAM	
<i>Phyllotreta nemorum</i>	(Linnaeus 1758)	ASE	
<i>Phyllotreta nigripes</i>	(Fabricius, 1775)	WPA	
<i>Phyllotreta nitidicollis</i>	Weise, 1888	NAF	
<i>Phyllotreta ochripes</i>	(Curtis, 1837)	SIE	
<i>Phyllotreta parallela</i>	(Boieldieu, 1859)	WME	
<i>Phyllotreta procera</i>	(Redtenbacher, 1849)	AFM	
<i>Phyllotreta punctulata</i>	(Marsham, 1802)	EUR	
<i>Phyllotreta rufitarsis</i>	Allard, 1859	AFM	
<i>Phyllotreta rugifrons</i>	Küster, 1849	MED	
<i>Phyllotreta undulata</i>	Kutschera, 1860	PAL	
<i>Phyllotreta variipennis</i>	(Boieldieu, 1859)	MED	
<i>Podagrica fuscicornis</i>	(Linnaeus, 1766)	MED	
<i>Podagrica malvae</i>	(Illiger, 1807)	TEM	
<i>Podagrica menetriesi</i>	(Faldermann, 1837)	CAE	
<i>Psylliodes algerica</i>	Allard, 1859	WME	
<i>Psylliodes ausoniae</i>	Leonardi, 2013	SEU	
<i>Psylliodes brisouti</i>	Bedel, 1898	EUR	
<i>Psylliodes caneparitii</i>	Leonardi, 2007	WME	
<i>Psylliodes chalcomera</i>	(Illiger, 1807)	PAL	
<i>Psylliodes chrysocephala</i>	(Linnaeus, 1758)	WPA	
<i>Psylliodes circumdata</i>	Redtenbacher, 1842	EUM	
<i>Psylliodes cuprea</i>	(Koch, 1803)	CEM	
<i>Psylliodes fusiformis</i>	(Illiger, 1807)	WME	
<i>Psylliodes gibbosa</i>	Allard, 1860	MED	
<i>Psylliodes heikertingeri</i>	Jacobson, 1922	NAF	
<i>Psylliodes hospes</i>	Wollaston, 1854	MED	
<i>Psylliodes hyoscyami</i>	(Linnaeus, 1758)	ASE	
<i>Psylliodes inflata</i>	Reiche, 1858	TUM	
<i>Psylliodes instabilis</i>	Foudras, 1860	EUR	
<i>Psylliodes isatidis</i>	Heikertinger, 1912	CAE	
<i>Psylliodes laevifrons</i>	Kutschera, 1864	SEU	

Continued on next page

Table 1 – Continued from previous page

SPECIES	AUTHORITY	COROTYPE	NEW RECORD
<i>Psylliodes laticollis</i>	Kutschera, 1864	EUM	
<i>Psylliodes leonhardi</i>	Heikertinger, 1926	SEU	
<i>Psylliodes libertii</i>	Leonardi, 2013	SEU	
<i>Psylliodes luteola</i>	(O.F. Müller, 1776)	EUM	
<i>Psylliodes marcida</i>	(Illiger, 1807)	EUM	
<i>Psylliodes maroccana</i>	Heikertinger, 1916	WME	
<i>Psylliodes milleri milleri</i>	Kutschera, 1964	MED	
<i>Psylliodes napi</i>	(Fabricius, 1792)	SIE	
<i>Psylliodes obsкуроaenea</i>	Rosenhauer, 1856	WME	
<i>Psylliodes pallidipennis</i>	Rosenhauer, 1856	MED	
<i>Psylliodes puncticollis</i>	Rosenhauer, 1856	MED	
<i>Psylliodes pyritosa</i>	Kutschera, 1864	MED	
<i>Psylliodes ruffoi</i>	Leonardi, 1975	SEU	
<i>Sphaeroderma rubidum</i>	(Graells, 1858)	EUM	
<i>Sphaeroderma testaceum</i>	(Fabricius, 1775)	EUR	

#### 4. Conclusions and final remarks

With the first report on *Altica carduorum* Meneville-Guérin, *Chaetocnema obesa* (Boieldieu), *Longitarsus helvolus* Kutschera, *L. monticola* Kutschera, *L. rectilineatus* (Foudras), *Mniophila muscorum* (Koch) and the alien species *Epitrix hirtipennis* (Melsheimer), 160 species of flea beetles from Sicily are currently known. The occurrence of *Longitarsus membranaceus* (Foudras) is considered questionable and will need further confirms. The Alticini species of Sicily constitute about 45% of the whole Italian flea beetle fauna (Biondi 2013). Eighteen different chorotypes are represented; 53% of the total species show a widespread distribution in the Palaearctic Region (PAL s.l.), including mainly the Euro-Mediterranean chorotype (25 species; 15.6% of the total) (see Figs. 1 and 2).

Particularly important results is also the contribution of the Mediterranean component (MED s.l.: 25% of the total), with the Mediterranean chorotype (20 species), West-Mediterranean chorotype (15) and North-African chorotype, this last represented by 5 species, *Dibolia maura* Allard, *Longitarsus albus* (Allard), *Longitarsus scaphidioides* Abeille, *Phyllotreta nitidicollis* Weise and *Psylliodes heikertingeri* Jacobson, shared with Mediterranean Africa and mainly occurring in the southern-eastern area of Sicily. Significant are also the European (21 species) and South-European (9) chorotypes, with species occurring mainly in the Apennine area of northern Sicily.

As for the endemism, Sicily has 14 subendemic species of Chrysomelidae, amounting to 62.5% of the entire Italian endemic leaf beetle component, but no strictly flea beetle endemic taxa is present, apart, perhaps, from *Aphthona sicelidis* (Biondi *et al.* 2013). However, four species of Alticini – *Longitarsus laureolae* Biondi, *Psylliodes caneparii* Leonardi, *P. leonhardi* Heikertinger and *P. ruffoi* Leonardi – show a distribution including only Southern Apennines and North-Western Sicily (SISA), due surely to the position of the island that reflects its close geographic proximity and ecological continuity with

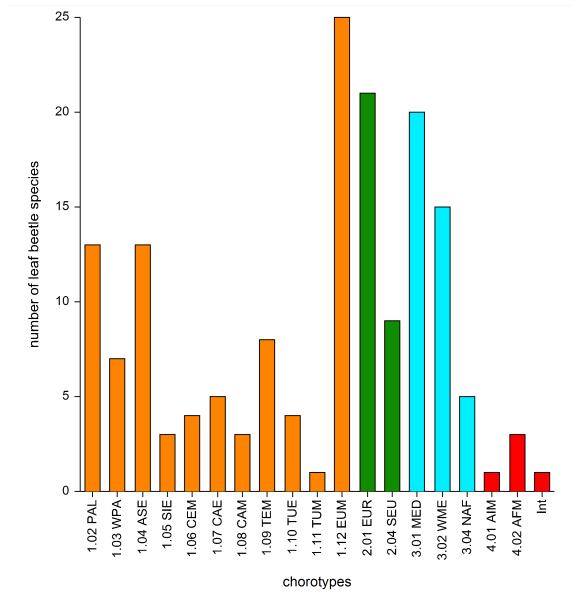


FIGURE 1. Number of Sicilian flea beetle species per chorotype (see Sec. 2 for abbreviations)

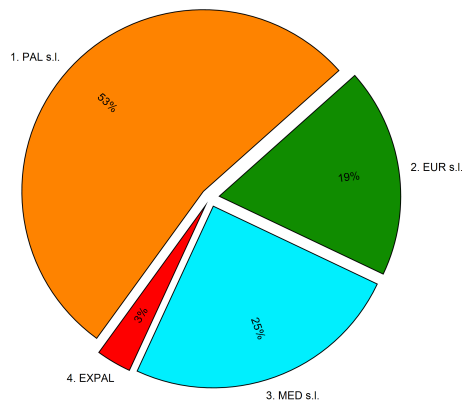


FIGURE 2. Percentage of Sicilian flea beetle species per chorotype class (see Sec. 2 for abbreviations)

the southern Apennines, as observed also for other beetles (Stroscio *et al.* 2011). After analyzing the trophic categories, it emerges that the monophagous species represent the 41% of the total number (see Fig. 3), followed by polyphagous (31%) and oligophagous

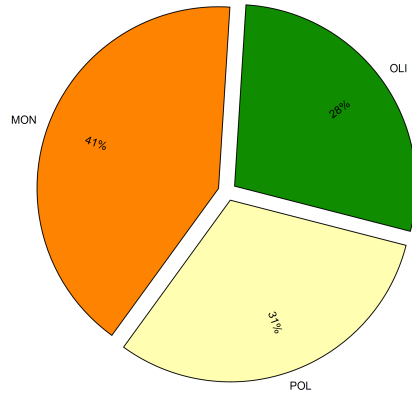


FIGURE 3. Percentage of Sicilian flea beetle species per trophic category (see Sec. 2 for abbreviations)

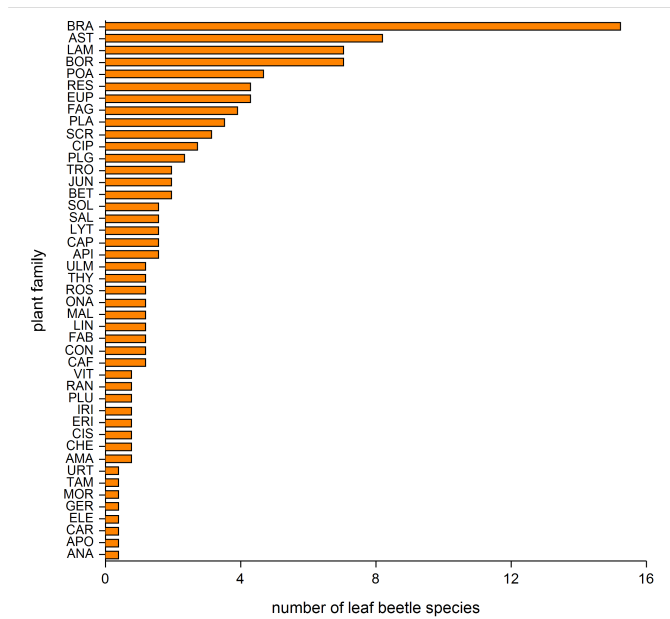


FIGURE 4. Percentage of Sicilian flea beetle species per host plant family (see Sec. 2 for abbreviations)

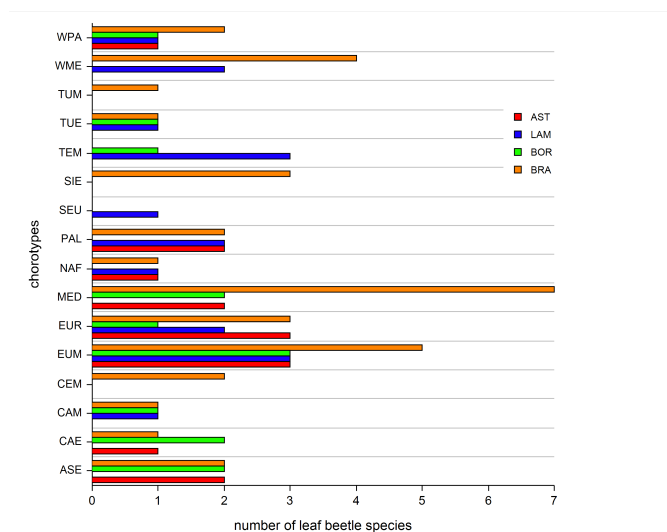


FIGURE 5. Number of Sicilian flea beetle species per chorotype and most significant host plant families (see Sec. 2 for abbreviations)

(28%), which evidences the high trophic specialization of this group of Chrysomelidae. Sicilian flea beetle species are globally associated with 44 different vascular plant families, with the exception of *M. muscorum* (Koch) which develops on mosses. Moreover, it is interesting to note that 50.6% of the Alticini species in Sicily are associated with only four plant families: Brassicaceae (21.9%), used as host plants mainly by Mediterranean flea beetle species (MED and WME); Lamiaceae (10,6%), Asteraceae (9,4%), and Boraginaceae (8,7%) (see Figs. 4 and 5).

We can conclude by affirming that, even if the number of flea beetle taxa is already rather high, it is very likely that future researches will significantly increase our knowledge of this speciose group of chrysomelids in Sicily.

### Acknowledgments

We are grateful to our friend Carlo Leonardi, former curator of the Entomology Section of the Natural History Museum of Milan, expert in taxonomy of the flea beetles, for his precious suggestions during the writing of this paper. A special thank also to Cesare Belló for his great help in researches.

### References

- Aslan, E. G. and Ayvaz, Y. (2009). "Diversity of Alticinae (Coleoptera, Chrysomelidae) in Kasnak Oak Forest Nature Reserve, Isparta, Turkey". *Turkish Journal of Zoology* **33**, 251–262. DOI: [10.3906/zoo-0806-2](https://doi.org/10.3906/zoo-0806-2).

- Baviera, C. (2006). "Coleotteri nuovi o poco noti di Sicilia III (*Carabidae*, *Histeridae*, *Cerambycidae*, *Chrysomelidae*, *Anobiidae*, *Bothrideridae*, *Tenebrionidae*, *Curculionidae*, *Scolytidae*)". *Il Naturalista Siciliano*. S. IV **30**(1), 21–28. URL: [http://www.sssn.it/PDF/PDF%20Nat.Sic.%201%202006/Baviera\\_21-28.pdf](http://www.sssn.it/PDF/PDF%20Nat.Sic.%201%202006/Baviera_21-28.pdf).
- Baviera, C. (2007). "First record of *Gonioctena* (Coleoptera Chrysomelidae, Chrysomelinae) in Sicily, with the description of *Gonioctena theae* n. sp." *Italian Journal of Zoology* **74**(4), 389–393. DOI: [10.1080/11250000701650719](https://doi.org/10.1080/11250000701650719).
- Baviera, C. (2008). "Prima segnalazione del genere *Aesalus*, Fabricius, 1801 in Sicilia con descrizione di *Aesalus scarabaeoides siculus* n. ssp. (Coleoptera Lucanidae: Aesalinae)." *Revue Suisse de Zoologie* **115**(3), 585–592. URL: <http://biostor.org/reference/115672>.
- Baviera, C. (2009). "Coleotteri nuovi o poco noti di Sicilia IV (Carabidae, Histeridae, Cholevidae, Elateridae, Cerambycidae et Raymondionymidae)." *Il Naturalista Siciliano*. S. IV **33**(1-2), 149–156. URL: <http://www.sssn.it/PDF/PDF%20NS%2033/149-156.pdf>.
- Baviera, C. (2010). "*Alaocyba ientilei* n. sp. (Coleoptera: Raymondionymidae) from Marettimo (Egadi Islands)." *Revue Suisse de Zoologie* **117**(1), 11–16. URL: <http://biostor.org/reference/134769>.
- Baviera, C. (2011). "Nuovi dati sulla biodiversità della Sicilia Nord-Orientale: la coleotterofauna endemica." *Biogeographia* **30**, 449–465.
- Baviera, C. (2015). "A review of the genus *Solariola* Flach, 1908 (Coleoptera: Curculionidae: Entiminae, Peritelini)." *Zootaxa* **3920**(3), 401–430. DOI: [10.11646/zootaxa.3920.3.1](https://doi.org/10.11646/zootaxa.3920.3.1).
- Baviera, C. and Audisio, P. (2014). "The Nitidulidae and Kateretidae (Coleoptera: Cucujoidea) of Sicily: recent records and updated checklist." *Atti della Accademia Peloritana dei Pericolanti. Classe di Scienze Fisiche, Matematiche e Naturali* **92**(2), A1 [32 pages]. DOI: [10.1478/AAPP.922A1](https://doi.org/10.1478/AAPP.922A1).
- Baviera, C. and Liberti, G. (2010). "Dasytidae of the Egadi Archipelago (Coleoptera, Cleroidea) with description of *Danacea hierena* n. sp." *Zootaxa* **2351**, 49–57. URL: <http://www.mapress.com/zootaxa/2010/f/zt02351p057.pdf>.
- Baviera, C. and Magnano, L. (2010). "Contribution to the knowledge of the weevil subgenus *Aramichmus* Gozis, genus *Otiorrhynchus* Germar (Coleoptera, Curculionidae) from Sicily and the Sicilian islands." *Zootaxa* **2432**, 45–58. URL: <http://www.mapress.com/zootaxa/2010/f/zt02432p058.pdf>.
- Baviera, C. and Sparacio, I. (2002). "Descrizione di una nuova specie di *Buprestis* Linnaeus della Sicilia". *Il Naturalista Siciliano*. S. IV **26**(1-2), 93–99. URL: <http://www.edizionidanaus.com/pdf/pdf/Baviera%20&%20Sparacio,2002-nuovo%20Buprestis%20Sicilia.pdf>.
- Belló, C. and Baviera, C. (2011). "On the Sicilian species of *Pseudomeira* Stierlin (Coleoptera: Curculionidae: Entiminae)." *Zootaxa* **3100**, 35–68. URL: <http://www.mapress.com/zootaxa/2011/f/zt03100p068.pdf>.
- Bertolini, S. de (1872). *Catalogo sinonimico e topografico dei coleotteri d'Italia*. Firenze: Tipografia Cenniniana. DOI: [10.5962/bhl.title.8783](https://doi.org/10.5962/bhl.title.8783).
- Biondi, M. (1982). "Le specie appenniniche del genere *Crepidotera* Chevrolat sensu Foudras (Coleoptera, Chrysomelidae)." *Bollettino del Museo Civico di Storia Naturale di Verona* **8**(1), 45–66.
- Biondi, M. (1983). "Contributo alla conoscenza delle Alticinae della fauna italiana (Coleoptera, Chrysomelidae)." *Fragmenta Entomologica* **17**(1), 151–158.
- Biondi, M. (1988). "Contributo alla conoscenza dei Crisomelidi Alticini dei Monti Nebrodi e Peloritani (Sicilia Nord Orientale) e descrizione di una nuova specie di *Longitarsus* (Coleoptera, Chrysomelidae, Alticinae)." *Animalia* **15**(1-3), 129–149.
- Biondi, M. (1989). "Note faunistiche su alcune specie di Chrysomelidae Alticinae della fauna italiana (Coleoptera)." *Bollettino della Società Entomologica Italiana* **121**(2), 98–103.
- Biondi, M. (1990). "Elenco commentato dei Crisomelidi Alticini della Fauna italiana (Coleoptera)." *Fragmenta Entomologica* **22**(1), 109–183.

- Biondi, M. (1993). "Contribution to the knowledge of flea beetle fauna in Italy (Coleoptera Chrysomelidae Alticinae)." *Bollettino della Società Entomologica Italiana* **124**(3), 173–178.
- Biondi, M. (1996). "Proposal for an ecological and zoogeographical categorization of the Mediterranean species of the flea beetle genus *Longitarsus* Berthold." In: *Chrysomelidae Biology*. Amsterdam, The Netherlands: SPB Academic Publishing, p. 365.
- Biondi, M. (2005-2013). "Coleoptera: Chrysomelidae Galerucinae Alticini". In: *Fauna Europaea version 2.4*. URL: <http://www.faunaeur.org>.
- Biondi, M. (2006). "Insecta Coleoptera Chrysomelidae Alticinae". In: *Checklist and distribution of the Italian fauna*. Ed. by S. Ruffo and F. Stoch. Vol. 17. Memorie del Museo Civico di Storia Naturale di Verona, 2. Serie, Sezione Scienze della Vita. Verona, pp. 225–227. (with data on Cd-Rom).
- Biondi, M., Daccordi, M., Regalin, R., and Zampetti, M. (1995). "Coleoptera Polyphaga XV (Chrysomelidae, Bruchidae)". In: *Checklist delle specie della fauna italiana*. Ed. by A. Minelli, S. Ruffo, and S. La Posta. Vol. 60. Bologna: Calderini. URL: <http://www.comitato.faunaitalia.it/docs/F60.DOC>.
- Biondi, M., Urbani, F., and D'Alessandro, P. (2013). "Endemism patterns in the Italian leaf beetle fauna (Coleoptera, Chrysomelidae)." *ZooKeys* **332**, 177–205. DOI: [10.3897/zookeys.332.5339](https://doi.org/10.3897/zookeys.332.5339).
- Bouchard, P., Bousquet, Y., Davies, A., Alonso-Zarazaga, M. A., Lawrence, J. F., Lyal, C. H. C., Newton, A. F., Reid, C. A. M., Schmitt, M., Slipinski, S. A., and Smith, A. B. T. (2011). "Family-group names in Coleoptera (Insecta)". *ZooKeys* **88**, 1–972. DOI: [10.3897/zookeys.88.807](https://doi.org/10.3897/zookeys.88.807).
- Caldara, R., Casalini, R., and Baviera, C. (2012). "Taxonomic and nomenclatural notes on the *Rhinusa tetra* (Fabricius) species complex (Coleoptera: Curculionidae)". *Zootaxa* **3329**, 31–40. URL: <http://www.mapress.com/zootaxa/2012/f/z03329p040f.pdf>.
- Ciofalo, S. (1886). "Catalogo dei Coleotteri dei dintorni di Termini Imerese posseduti e raccolti dal Professore Saverio Ciofalo". *Atti Accademia Gioenia di Scienze Naturali di Catania* **19**, 181–212.
- Daccordi, M. and Ruffo, S. (1975). "Coleotteri Crisomelidi delle isole Egadi e descrizione di una nuova specie del genere *Pachybrachis* Chev." *Bollettino del Museo Civico di Storia Naturale di Verona* **1**, 427–437.
- Döberl, M. (1994). "Interesting findings of Alticinae (Col. Chrysomelidae) in Western Europe". *Entomologische Nachrichten und Berichte* **38**, 179–182.
- Döberl, M. (2010). "Alticinae". In: *Catalogue of Palaearctic Coleoptera*. Vol. 6. Stenstrup, Denmark: Apollo Books, pp. 491–563.
- Doguet, S. (1975). "Contribution à l'étude des *Dibolia* d'Afrique du nord et de France [Col. Chrysomelidae]." *Nouvelle Revue d'Entomologie* **5**(2), 197–210.
- Doguet, S. (1994). *Coléoptères Chrysomelidae. Volume 2, Alticinae*. Faune de France 80. Paris: Fédération Française des Sociétés de Sciences Naturelles. 694 pages.
- Furth, D. G. (1979). "Zoogeography and host plants of *Longitarsus* in Israel, with descriptions of six new species (Coleoptera: Chrysomelidae)". *Israel Journal of Entomology* **13**, 79–124. URL: <http://www.entomology.org.il/sites/default/files/pdfs/IJE-1979-Furth-2.pdf>.
- Gruev, B. (1973). "Ueber die Einheit der *Longitarsus lycopi*-Gruppe und der *Longitarsus obliteratus*-Gruppe mit notizen ueber Verbreitung, Nomenklatur und Diagnostische Merkmale einigen Arten, sowie Beschreibung von Zwei neuen Arten (Coleoptera, Chrysomelidae)". *Trav. Sci. Biologie, Univ. Plovdiv* **11**(5), 127–145.
- Gruev, B. and Döberl, M. (1997). "General Distribution of the Flea Beetles in the Palaearctic Subregion. (Coleoptera, Chrysomelidae: Alticinae)". *Scopolia* **37**, 1–496.
- Gruev, B. and Döberl, M. (2005). *General Distribution of the Flea Beetles in the Palaearctic Subregion. (Coleoptera, Chrysomelidae: Alticinae). Supplement*. Pensoft Publishers.
- Gulli, G. (1961). "Contributo alla conoscenza dei Coleotteri etnei. Contd." *Bollettino della Associazione Romana di Entomologia* **16**(2), 1–6, 9–14, 21–26.
- Heikertinger, F. (1911). "Die Halticinengattung *Ochrosis* Foudr." *Arch. Naturg.* **77**, 19–34.

- Heikertinger, F. (1912). "Biogeographische skizzen ueber palaearktischen Halticinen (Col.) (nebst synonymischen Bemerkungen)". *Entomologische Mitteilungen* **1**, 236–241, 383–388.
- Heikertinger, F. (1914). "Skizzen zur Systematik und Nomenklatur der palaearktischen Halticinen". *Entomologische Blätter* **10**, 79–85.
- Heikertinger, F. (1926). "Bestimmungstabelle der Halticinenngattung *Psylliodes* aus dem palaearktischen". *Gebiete. II. Die hellfarbigen Arten Koleopterologische Rundschau* **12**, 101–138.
- Heikertinger, F. (1941). "Bestimmungstabelle der Palaearktischen *Phyllotreta*-Arten". *Koleopterologische Rundschau* **27**, 15–122.
- Israelson, G. (1985). "Notes on the coleopterous fauna of the Azores, with description of new species of *Athete* Thomson". *Boletim do Museu Municipal do Funchal* **37**(165), 5–19. URL: <http://publications.cm-funchal.pt/bitstream/100/1181/1/Bolmmf-1985-art165.pdf>.
- Jolivet, P. and K. Verma, K. (2002). *Biology of Leaf Beetles*. United Kingdom: Andover.
- Leonardi, C. (1970). "Materiali per uno studio filogenetico del genere *Psylliodes* (Coleoptera Chrysomelidae)". *Atti della Società Italiana di Scienze Naturali. Museo Civico di Storia Naturale, Milano* **110**(3), 201–223.
- Leonardi, C. (1971). "Considerazioni sulle *Psylliodes* del gruppo napi e descrizione di una nuova specie (Coleoptera Chrysomelidae)". *Atti della Società Italiana di Scienze Naturali. Museo Civico di Storia Naturale, Milano* **112**(4), 485–533.
- Leonardi, C. (1972a). "La *Psylliodes wachsmanni* Csiki specie distinta e suo inquadramento nel gruppo della *Psylliodes picina* (Coleoptera Chrysomelidae)". *Atti del Museo Civico di Storia Naturale di Trieste* **28**, 137–146.
- Leonardi, C. (1972b). "La spermateca nella sistematica del genere *Longitarsus*". *Atti della Società Italiana di Scienze Naturali. Museo Civico di Storia Naturale, Milano* **113**(1), 5–27.
- Leonardi, C. (1973). "Note corologiche e tassonomiche su alcuni *Longitarsus* con citazione di due specie nuove per l'Italia (Coleoptera Chrysomelidae)". *Atti del Museo Civico di Storia Naturale di Trieste* **28**, 137–146.
- Leonardi, C. (1975a). "Le *Psylliodes* appenniniche del Museo Civico di Storia Naturale di Verona (Coleoptera Chrysomelidae)". *Bollettino del Museo Civico di Storia Naturale di Verona* **2**, 51–90.
- Leonardi, C. (1975b). "Note su alcuni *Longitarsus* con descrizione di due nuove specie e citazione di quattro entità nuove per la fauna europea (Coleoptera Chrysomelidae)". *Atti della Società Italiana di Scienze Naturali. Museo Civico di Storia Naturale, Milano* **116**(3-4), 199–217.
- Leonardi, C. (1976). "Descrizione di un nuovo alticino europeo: *Longitarsus noricus* n. sp." *Atti della Società Italiana di Scienze Naturali. Museo Civico di Storia Naturale, Milano* **117**(3-4), 239–250.
- Leonardi, C. (1978). "Studio critico sulla *Psylliodes picina* (Marsh.) e sulle forme che le sono state attribuite, con particolare riguardo alla fauna italiana". *Atti della Società Italiana di Scienze Naturali. Museo Civico di Storia Naturale, Milano* **119**(3-4), 271–299.
- Leonardi, C. (2007). "Materiali inediti sul genere *Psylliodes* Latreille, con descrizione di quattro nuove specie mediterranee (Coleoptera Chrysomelidae)". *Atti della Società Italiana di Scienze Naturali. Museo Civico di Storia Naturale, Milano* **148**(2), 161–240.
- Leonardi, C. (2013). "Indagine critica su *Psylliodes laevifrons* Kutschera con descrizione di due nuove specie (Coleoptera Chrysomelidae)". *Atti della Società Italiana di Scienze Naturali. Museo Civico di Storia Naturale, Milano* **154**(2), 81–114.
- Leonardi, C. and Sassi, D. (1997). "I Crisomelidi (Coleoptera Chrysomelidae) del Monte Barro (Italia, Lombardia, Lecco)". *Memorie della Società Italiana di Scienze Naturali. Museo Civico di Storia Naturale, Milano* **27**(2), 189–227.
- Lo Cascio, P., Cecchi, B., Abbazzi, P., and Arnone, M. (2006). "A contribution to the knowledge of the coleoptera of the Aeolian Islands (Insecta Coleoptera)". *Il Naturalista Siciliano. S. IV* **30**(2), 315–341. URL: [http://www.ssn.it/PDF/PDF%20Nat.%20Sic.%202%202006/Lo%20Cascioetalii\\_315-341.pdf](http://www.ssn.it/PDF/PDF%20Nat.%20Sic.%202%202006/Lo%20Cascioetalii_315-341.pdf).



- Lo Valvo, F. and Massa, B. (1995). "Indice e check-list degli Artropodi terrestri di Lampedusa. Lampione e Pantelleria, con riferimenti bibliografici". *Il Naturalista Siciliano* **19** (Supplement), 871–896.
- Luigioni, P. (1929). "I coleotteri d'Italia. Catalogo sinonimico topografico bibliografico". *Memorie Accademia pontificia Nuovi Lincei* **13**, 1–1160.
- Lykouressis, D. P. (1991). "*Epitrix hirtipennis*, a new pest of tobacco in Greece, with notes of its morphology, biecology and control". *Entomologica Hellenica* **9**, 81–85.
- Magrini, P. and Baviera, C. (2011). "Note sulle *Typhloreicheia* (Holdhaus, 1924) siciliane del gruppo *praecox* con descrizione di una nuova specie (Coleoptera Carabidae: Scaritinae)". *Revue Suisse de Zoologie* **118**(2), 329–343.
- Meleshko, S. V. (2001). *Handbook of Vegetable Pests*. San Diego: Academic Press.
- Nadein, K. (2009). "Revision of the genus *Mniophila* Stephens, 1831 (Coleoptera: Chrysomelidae)". *Beiträge zur Entomologie* **59**(1), 103–131.
- Orlova-Bienkowskaja, M. J. (2014). "First record of the tobacco flea beetle *Epitrix hirtipennis* Melsheimer [Coleoptera: Chrysomelidae: Alticinae] in Russia". *EPPO Bulletin* **44**(1), 44–46. DOI: [10.1111/epp.12092](https://doi.org/10.1111/epp.12092).
- Porta, A. (1934). *Fauna Coleopterorum Italica. Vol. IV, Heteromera-Phytophaga*. 415 pp. Piacenza: Stabilimento Tipografico Piacentino.
- Raimondo, F. M., Domina, G., and Spadaro, V. (2010). "Checklist of the vascular flora of Sicily". *Quaderni di Botanica Ambientale Applicata* **21**, 189–252. URL: [http://www.ortobotanico.unipa.it/quaderni/21\\_189.pdf](http://www.ortobotanico.unipa.it/quaderni/21_189.pdf).
- Ratti, E. (1987). "Ricerche faunistiche del Museo civico di Storia Naturale di Venezia nell'isola di Pantelleria. VI - Coleoptera: Cerambycidae e Chrysomelidae". *Bollettino del Museo Civico di Storia Naturale di Venezia* **37**, 47–55.
- Sannino, L. and Balbiani, A. (1990). "Possibilità di controllo biologico di *Epitrix hirtipennis* in Italia". *L'Informatore Agrario* (13), 17–20.
- Sannino, L., Balbiani, A., and Espinosa, B. (1984). "Un nuovo fitofago devasta il tabacco nel beneventano: *Epitrix hirtipennis* Melsch." *L'Informatore Agrario* **40**(29), 55–57.
- Seeno, T. N. and Wilcox, J. A. (1982). "Un nuovo fitofago devasta il tabacco nel beneventano: *Epithrix hirtipennis* Melsch." *Entomography* **1**(1), 1–221.
- Stroscio, S., Baviera, C., Frati, F., Lo-Paro, G., and Nardi, F. (2011). "Deep genetic divergence in the darkling beetle *Pimelia rugulosa* Germar, 1824 (Coleoptera, Tenebrionidae) reflects Plio-Pleistocenic paleogeographic history of Sicily". *Journal of Zoological Systematics and Evolutionary Research* **49**(3), 196–203. DOI: [10.1111/j.1439-0469.2011.00617.x](https://doi.org/10.1111/j.1439-0469.2011.00617.x).
- Toševski, I., Caldara, R., Jović, J., Baviera, C., Hernández-Vera, G., Gassmann, A., and Emerson, B. C. (2014). "Revision of *Mecinus heydenii* species complex (Curculionidae): integrative taxonomy reveals multiple species exhibiting host specialization". *Zoologica Scripta*, 34–51. DOI: [10.1111/zsc.12037](https://doi.org/10.1111/zsc.12037).
- Toševski, I., Caldara, R., Jović, J., Baviera, C., Hernández-Vera, G., Gassmann, A., and Emerson, B. C. (2015). "Host associated genetic divergence and taxonomy in the *Rhinusa pilosa* Gyllenhal species complex: an integrative approach". *Systematic Entomology* **40**(1), 268–287. DOI: [10.1111/syen.12109](https://doi.org/10.1111/syen.12109).
- Toševski, I., Caldara, R., Jović, J., Hernández-Vera, G., Baviera, C., Gassmann, A., and Emerson, B. C. (2011). "Morphological, molecular and biological evidence reveal two cryptic species in *Mecinus janthinus* Germar (Coleoptera, Curculionidae), a successful biological control agent of Dalmatian toadflax, *Linaria dalmatica* (Lamiales, Plantaginaceae)". *Systematic Entomology* **36**(4), 741–753. DOI: [10.1111/j.1365-3113.2011.00593.x](https://doi.org/10.1111/j.1365-3113.2011.00593.x).

- Trenchev, G. and Tomov, R. (2000). "Tobacco flea beetle *Epitrix hirtipennis* Melsheimer (Coleoptera: Chrysomelidae), a new serious pest on tobacco in Bulgaria". *Yearbook for Plant Protection Skopje* **11**, 61–64.
- Vigna Taglianti, A., Audisio, P., Belfiore, C., Biondi, M., Bologna, M. A., Carpaneto, G. M., De Biase, A., De Felice, S., Piattella, E., Racheli, T., Zapparoli, M., and Zoia, S. (1993). "Riflessioni di gruppo sui corotipi fondamentali della fauna W-paleartica ed in particolare italiana". *Biogeographia, Lavori della Società Italiana di Biogeografia. Nuova Serie* **16**, 159–179.
- Vigna Taglianti, A., Audisio, P., Biondi, M., Bologna, M. A., Carpaneto, G. M., De Biase, A., Fattorini, S., Piattella, E., Sindaco, R., Venchi, A., and Zapparoli, M. (1999). "A proposal for a chorotype classification of the Near East Fauna, in the framework of the Western Palearctic region". *Biogeographia, Lavori della Società Italiana di Biogeografia. Nuova Serie* **20**, 31–59.
- Vitale, F. (1920). "Coleotteri nuovi per la Sicilia." *Atti Regia Accademia Peloritana* **XXIX**, 3–13.
- Vitale, F. (1932). "I Chrysomelidae siciliani. Catalogo sinonimico. Parte I". *Atti Regia Accademia Peloritana* **XXXV**, 39–66.
- Vitale, F. (1935). "Contributo all'Entomologia Siciliana. I Chrysomelidae siciliani. Catalogo sinonimico, Parte II." *Atti Regia Accademia Peloritana* **XXXVII**, 73–94.

---

<sup>a</sup> Dipartimento di Scienze Biologiche e Ambientali  
Università degli Studi di Messina  
Contrada Papardo, 98166 Messina, Italy

<sup>b</sup> Dipartimento di Medicina Clinica, Sanità Pubblica, Scienze della Vita e dell'Ambiente  
Università degli Studi dell'Aquila  
Piazzale Salvatore Tommasi 1, 67100 Coppito (L'Aquila), Italy

\* To whom correspondence should be addressed | Email: cbaviera@unime.it